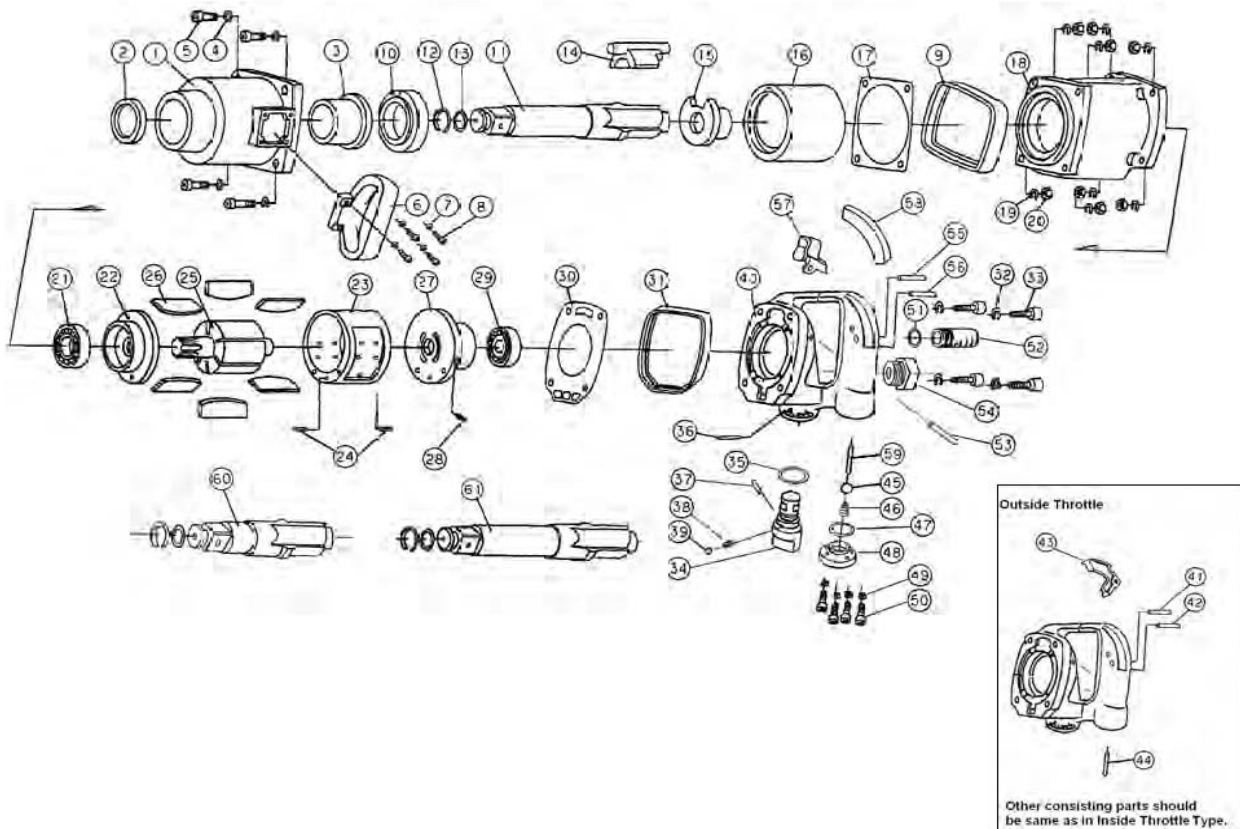


NL	Slagmoersleutel	1007400A(L)
GB	Impact wrench	1007400A(L)
D	Schlagschrauber	1007400A(L)
F	Boulonneuse	1007400A(L)
I	Avvitatori ad Impulso	1007400A(L)
DK	Slagnøgle	1007400A(L)
N	Muttertrekere	1007400A(L)



Index	Parts No.	Description	Quantity
1	RP837701	Hammer Housing Complete	1
<2>	RP837702	Oil Seal VB40525 <part 1>	1
<3>	RP837703	Bushing, Pressed In <part 1>	1
4	RP837704	Washer, Spring M8	4
5	RP837705	Hex Cap Bolt (M8 X 37)	4
6	RP837706	D- Handle	1
6A	RP835806	Angled D-Handle	*
7	RP837707	Washer, Spring M6	4
8	RP837708	Hex Cap Bolt (M6 X 18)	4
9	RP837709	Rubber Protector (Front)	1
10	RP837710	Bushing Anvil	1
11	RP837711	Anvil, Complete (Light, Long)	*
<12>	RP837712	Ring, Retainer <part 11>	1
<13>	RP837713	O- Ring, Retainer <part 11>	1
14	RP837714	Hammer	1
15	RP837715	Driver	1
16	RP837716	Frame, Hammer	1
17	RP837717	Front Gasket, Motor Housing	1
18	RP837718	Motor Housing, Complete	1
19	RP837719	Washer, Spring M8	8
20	RP837720	Hex Nut M8	8
<21>	RP837721	Bearing 6205Z <part 22>	1
<22>	RP837722	Endplate Complete, Front <part 18>	1
<23>	RP837723	Cylinder Complete <part 18>	1
<24>	RP837724	Pin (6 X 14) <part 18>	2
25	RP837725	Rotor	1
26	RP837726	Blade, Rotor	6
27	RP837727	Endplate Complete, Rear	1
<28>	RP837728	Pin, Endplate (4 X 10) <part 27>	1
<29>	RP837729	Bearing 6204 <part 27>	1
30	RP837730	Rear Gasket, Motor Housing	1

Parts with < > marked shall not be supplied individually, since it is an integrated component

Index	Parts No.	Description	Quantity
31	RP837731	Rubber Protector, Rear	1
32	RP837732	Washer, Spring M8	4
33	RP837733	Hex Cap, Bolt (M8 X 35)	4
34	RP837734	Reverse /Regulator Lever, Complete	1
35	RP837735	O-Ring, Reverse Lever P16	1
36	RP837736	Pin, Reverse Lever Retainer (4X30)	1
<37>	RP837737	Stopper, Reverse Lever <part 34>	1
<38>	RP837738	Spring, Rev. Lever Ret. <part 34>	1
<39>	RP837739	Steel Ball (4 mm) <part 34>	1
40	RP837740	Handle	1
41	RP837741	Pin 4X26 (Outside Throttle)	*
42	RP837742	Needle Pin 4X19,8 (Outside Throttle)	*
43	RP837743	Throttle Lever (Outside Throttle)	*
44	RP837744	Pin, Throttle (Outside Throttle)	*
45	RP837745	Ball, Valve Ø 1/2	1
46	RP837746	Spring, Throttle Pin	1
47	RP837747	O-Ring, Inlet Cap P16	1
48	RP837748	Inlet Cap	1
49	RP837749	Washer, Spring M5	4
50	RP837750	Hex Cap Bolt (M5 X 18)	4
51	RP837751	O-Ring, Silencer Case N22	1
52	RP837752	Case, Silencer	1
53	RP837753	Pin, Silencer Case (3 X 36)	1
54	RP837754	Bushing, Air Inlet	1
55	RP837755	Pin, Throttle Lever Retainer (3 X 25)	1
56	RP837756	Needle Pin, Throttle Lever (3 X 15,8)	1
57	RP837757	Throttle Lever	1
58	RP837758	Rubber Cover	1
59	RP837759	Pin, Throttle	1
60	RP837760	Anvil Complete (Short 1007400A)	*
61	RP837761	Anvil Complete (Long Standard)	1

* option