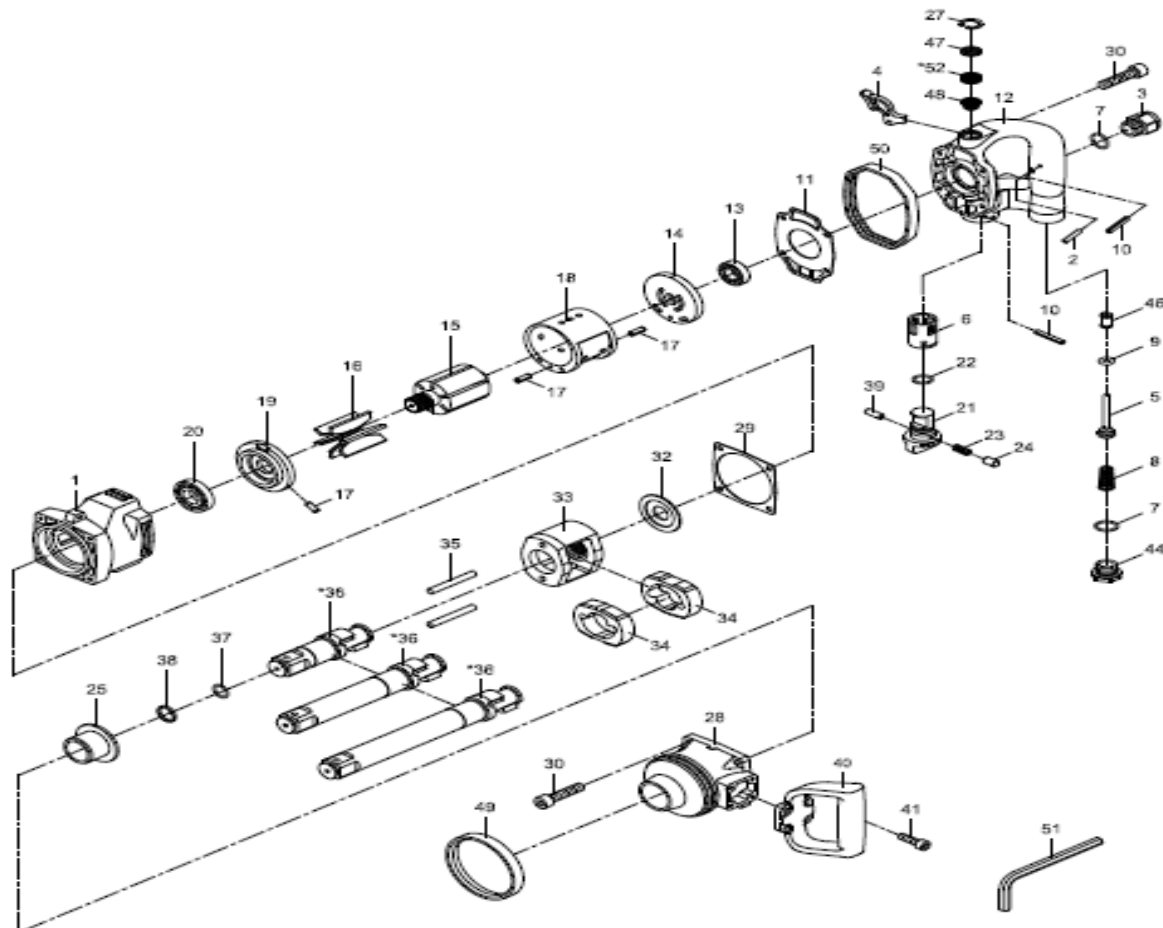


- NL** Slagmoersleutel
- GB** Impact wrench
- D** Schlagschrauber
- F** Boulonreuse
- I** Avvitatori ad Impulso
- DK** Slagnøgle
- N** Muttertrekere

- RC766
- RC766
- RC766
- RC766
- RC766
- RC766
- RC766



Index	Parts No.	Description	Qty
1	RPSM47407301	Motor housing	1
2	RPSMPN04002308	Pin 4x23.8	1
3	RPSM47407103	Air Inlet	1
4	RPSM47407304	Trigger	1
5	RPSM47407105	Valver stem	1
6	RPSM47407106	Valve bushing	1
7	RPSMOR01908204	O-Ring (2) 19.8x2.4	1
8	RPSM43403147	Valve spring	1
9	RPSMOR00705305	O-Ring 7.5x3.5 Hs90	1
10	RPSM61902	Spring Pin (2) 4x28	1
11	RPSM47407334	Gasket	1
12	RPSM47407320	Rear cover	1
13	RPSM02032012	Ball bearing 6003z	1
14	RPSM47407314	Rear End plate	1
15	RPSM47407315	Rotor	1
16	RPSM47407316	Rotor blade (6)	1
17	RPSMSP04001000	Spring Pin (3) 4x10	1
18	RPSM47407318	Cylinder	1
19	RPSM47407419	Front end plate	1
20	RPSMOR14	Ball bearing (R14)	1
21	RPSM47407121	Air regulator	1
22	RPSMOR01608204	O-Ring	1
23	RPSM43403323	Spring	1
24	RPSM43403324	Pin	1
25	RPSM43407325	Anvil Bushing	1

Index	Parts No.	Description	Qty
27	RPSM5282711	Internal Ring (RTW-22)	1
28	RPSM47407328	Hammer Case	1
29	RPSM47407335	Gasket	1
30	RPSM7H753539	Screw (8) (M6x25)	1
32	RPSM47407327	Washer	1
33	RPSM47407308	Hammer Cage	1
34	RPSM47407311	Hammer (2)	1
35	RPSM47407317	Hammer Pin (2)	1
*36	RPSM47407302-11	Anvil (1")	1
	RPSM474073L02-71	Anvil (1" L=7)	1
	RPSM474073L02-81	Anvil (1" L=8)	1
37	RPSM10211	O- Ring (17.8x2.4)	1
38	RPSM47405112	Retainer Ring	1
39	RPSM40317-14	Spring Pin (3x8)	1
40	RPSM47407359	Dead Handle	1
41	RPSM7H753528	Screw (4) (M6x20)	1
44	RPSM47407312	Screw	1
46	RPSM47407146	Bushing	1
47	RPSM47407364	Net	1
48	RPSM47407365	Screen	1
49	RPSM47407363	Rubber Ring	1
50	RPSM47407362	Rubber Ring	1
51	RPSM10018	Hex. Key Wrench	1
*52	RPSM47407350	Muffer Material	1

\* Optional part