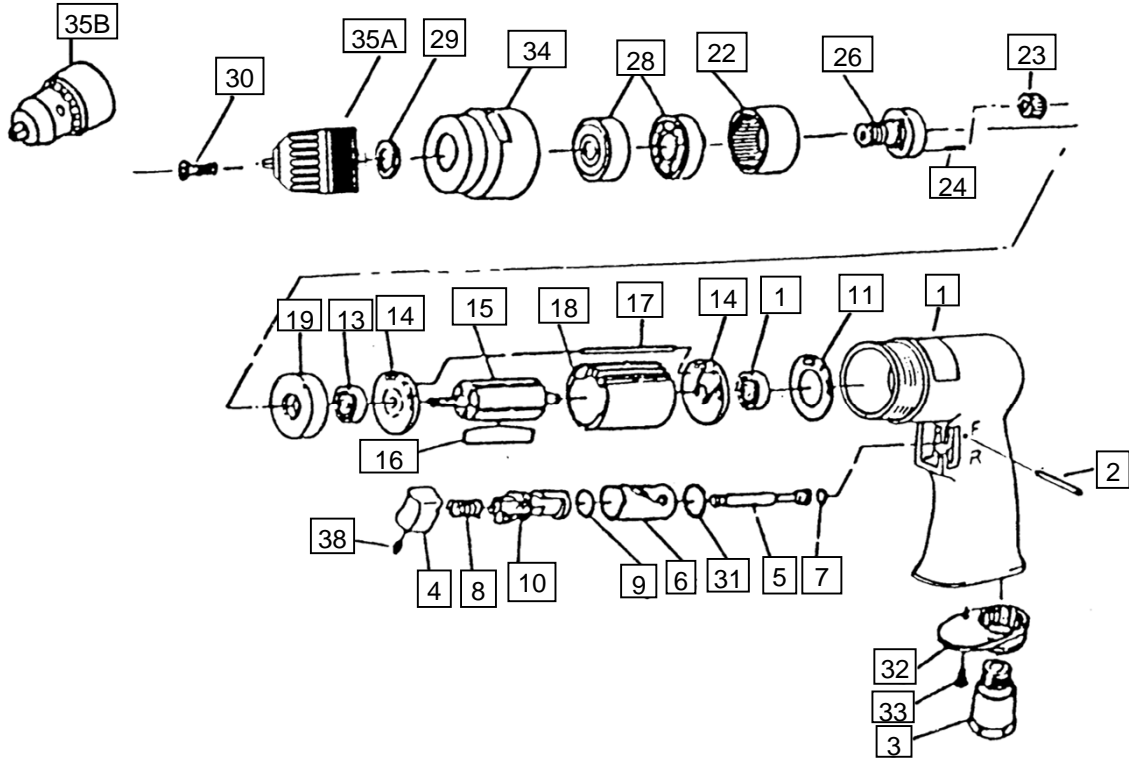


- NL** Boormachine
- GB** Drill
- D** Bohrmaschine
- F** Foreuse
- I** Trapani ad aria
- DK** Boremaskine
- N** Driller

- RC 206(A)**
- RC 206(A)**
- RC 206(A)**
- RC 206(A)**
- RC 206(A)**
- RC 206(A)**
- RC 206(A)**



Index	Parts No.	Description	Quantity
1	RPSM72501	Motor housing	1
2	RP1120162	Pin	1
3	RPSM72503	Air inlet	1
4	RPSM72504	Trigger	1
5+7	RPSM72505	Valve stem+o-ring	1
6	RPSM72506	Reverse bushing	1
7	RPOR23385	O-ring	1
8	RPSM72508	Valve spring	1
9	RPOR131625	O-ring	1
10	RPSM72510	Reverse lever	1
11	RPSM72511	Motor gasket	1
13	RPBB626ZZ	Ball bearing	2
14	RPSM72514	End plate	2
15	RPSM72515	Rotor	1
16	RPSM72516	Rotor blade	5
17	RPSM72517	Pin	1
18	RP1120169	Cylinder	1

NS = Not Shown

Index	Parts No.	Description	Quantity
19	RPSM72519	Spacer	1
22	RPSM72522	Internal gear	1
23	RPSM72523	Planet gear	3
24	RPSM70924R	Pin	3
26	RPSM72526	Work spindle	1
28	RPBB6201ZZ	Ball bearing	2
29	RP0022025	Chuck spacer	1
30	RPSM72430	Chuck screw	1
31	RPOR23472	O-ring	1
32	RPSM72532	Exhaust diffuser	1
33	RPSM72533	Screw	2
34	RPSM72534	Clamp nut	1
35	RA8650	Chuck key for RA8648	1
35A	RA8655N10	Chuck keyless	1
35B	RA8648	Chuck	1
38	RPSM72538	Set screw	1
	RPSM72599	Handel protection NS	1
	RAH-300	Exhaust hose NS	option