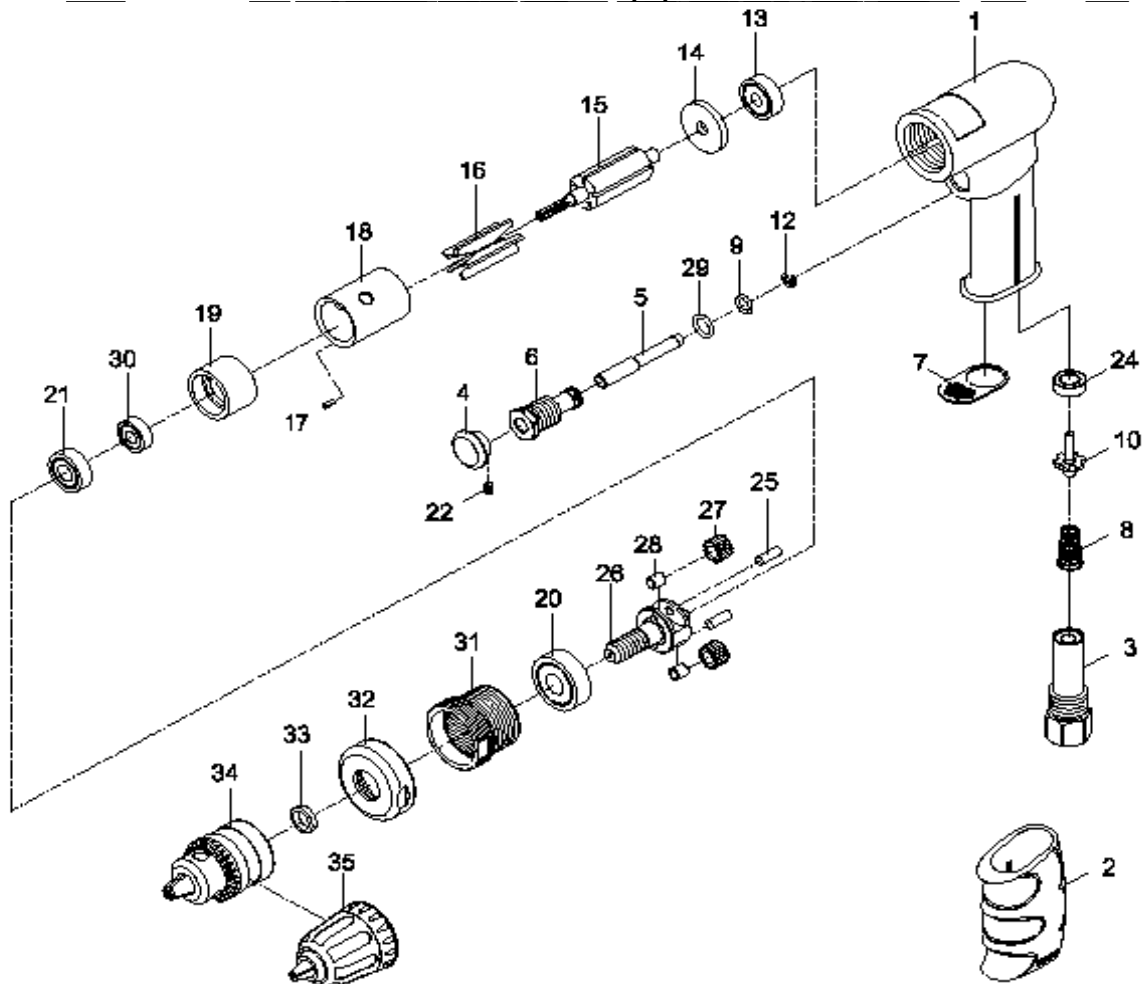


(NL) Boormachine
 (GB) Drill
 (D) Bohrmaschine
 (F) Foreuse
 (I) Trapani ad aria
 (DK) Boremaskine
 (N) Driller

RC 203(A)
 RC 203(A)
 RC 203(A)
 RC 203(A)
 RC 203(A)
 RC 203(A)
 RC 203(A)



2008-12



Index	Parts No.	Description	Quantity
1	RPSM728301	Motor housing	1
2	RPSM728252-21	Rubber grip	1
3	RP16401	Air inlet	1
4	RPSMAS000164	Trigger	1
5	RPSM728205	Valve stem	1
6	RPSM728206	Valve bushing	1
7	RPSM728207	Exhaust diffuser	1
8	RP16402	Spring	1
9	RPSM40333-12	O-ring 6.0x1.5	1
10	RP75-725146	Valve stem	1
11	Take 24		
12	RPSM60312	Retaining ring	1
13	RPBB626ZZ	Ball bearing 626zz	1
14	RPSM728214	Rear end plate	1
15	RPSM728215	Rotor	1
16	RPSM72816	Rotor blade	5
17	RP0530116	Spring pin	1
18	RPSM728118-21	Cylinder	1

Index	Parts No.	Description	Quantity
19	RPSM728119	Front end plate	1
20	RPBB600ZZ	Ball bearing 6000zz	1
21	RPBB698ZZ	Ball bearing 698zz	1
22	RP16404	Set screw 3x4	1
23	Take 24		
24	RP75-725145	Rubber spacer	1
25	RPSM72825	Pin 3.97x10.8	2
26	RPSM728126	Cage	1
27	RPSM72827	Gear	2
28	RPSM72828	Bushing	2
29	RPOR3290	O-ring 7.65x1.78	1
30	RPBB696ZZ	Ball bearing 696zz	1
31	RPSM728131	Internal gear	1
32	RPSM728132	Clamp nut	1
33	RPSM72833	Washer	1
34	RA8647	Drill chuck	1
34B	RA8647A	Chuck keyless	1
35	RA8650	Chuck key	1