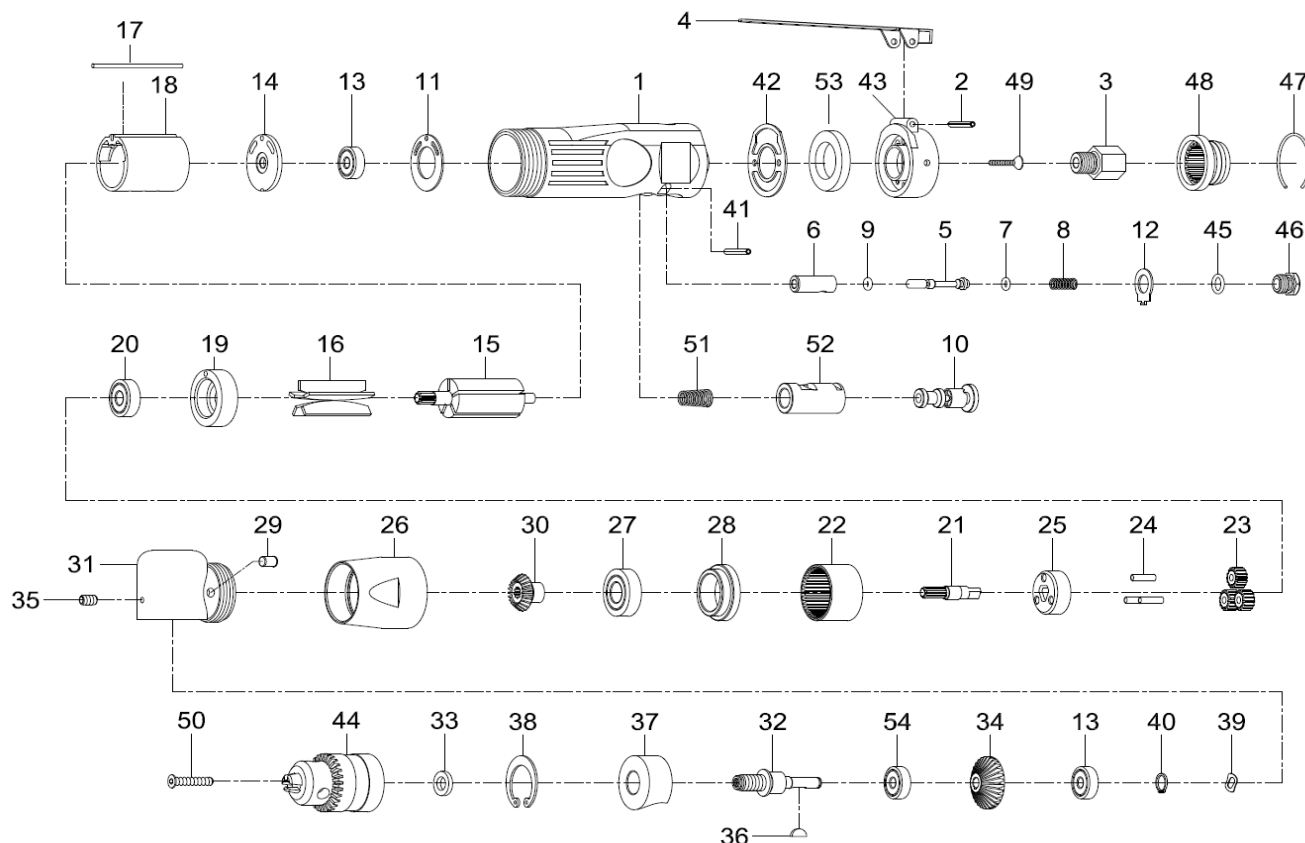


NL Boormachine
GB Drill
D Bohrmaschine
F Foreuse
I Trapani ad aria
DK Boremaskine
N Driller

RC 208R(A)
RC 208R(A)
RC 208R(A)
RC 208R(A)
RC 208R(A)
RC 208R(A)
RC 208R(A)



Index	Parts No.	Description	Quantity
1	RPSM70901R	Motor housing	1
2	RPSM70902R	Pin (3x24L)	1
3	RPSM70903R	Air inlet	1
4	RPSM70904R	Throttle lever	1
5	RP84205-11S	Valve stem	1
6	RPSM70906R	Valve	1
7	RPOR377	O-ring (3.5x2.0)	1
8	RPSM70908R	Spring	1
9	RPOR3893	O-ring (2x1.5)	1
10	RPSM70910R	Reverse lever	1
11	RPSM70911R	Motor gasket	1
12	RPSM70912R	Reverse retainer	1
13	RPBB626ZZ	Ball bearing	2
14	RPSM72514	End plate	1
15	RPSM70915R	Rotor	1
16	RPSM72516	Rotor blade	5
17	RPSM72517	Pin (2.5x55L)	1
18	RPSM80218-22	Cylinder	1
19	RPSM70919R	Front end plate	1
20	RPBB608ZZ	Ball bearing	1
21	RPSM70921R	Shaft	1
22	RPSM70922R	Internal gear	1
23	RPSM70923R	Planet gear	3
24	RPSM70924R	Pin (4x13.8L)	3
25	RPSM70925R	Cage	1
26	RPSM70926R	Lock ring	1
27	RPBB6001	Ball bearing	1
28	RPSM70928R	Spacer	1

Index	Parts No.	Description	Quantity
29	RPSM70929R	Oil Cap	1
30	RPSM70930R	Pinion	1
31	RPSM70931R	Angle housing	1
32	RPSM70932RN	Spindle	1
33	RPSM70133	Washer	1
34	RPSM70934R	Gear	1
35	RPES04X06	Set screw (M4x6L)	1
36	RPSM70936R	Key	1
37	RPSM70937R	Bearing cap	1
38	RPSM70938R	Retainer ring	1
39	RPSM70939R	Wave washer	1
40	RPSM70940R	Retainer ring	1
41	RPSM70941R	Spring pin (3x18L)	1
42	RPSM70942R	Gasket	1
43	RPSM70943R	Rear cover	1
44	RA8648	Drill chuck (3/8")	1
44A	RA8655A	Keyless chuck (not shown)	1
45	RPSM70945R	O-ring	1
46	RPSM70946R	Throttle valve plug	1
47	RPSM70947R	Retainer ring (1.2x35)	1
48	RPSM70948R	Exhaust deflector	1
49	RPSM70949R	Screw (M3x15L)	2
50	RP0242107	Chuck screw (M5x25)	1
51	RPSM70951R	Spring	1
52	RPSM70952R	Reverse bushing	1
53	RPSM70953R	Muffler	1
54	RPBB607ZZ	Ball bearing	1
55	RA8650	Chuck key (not shown)	1