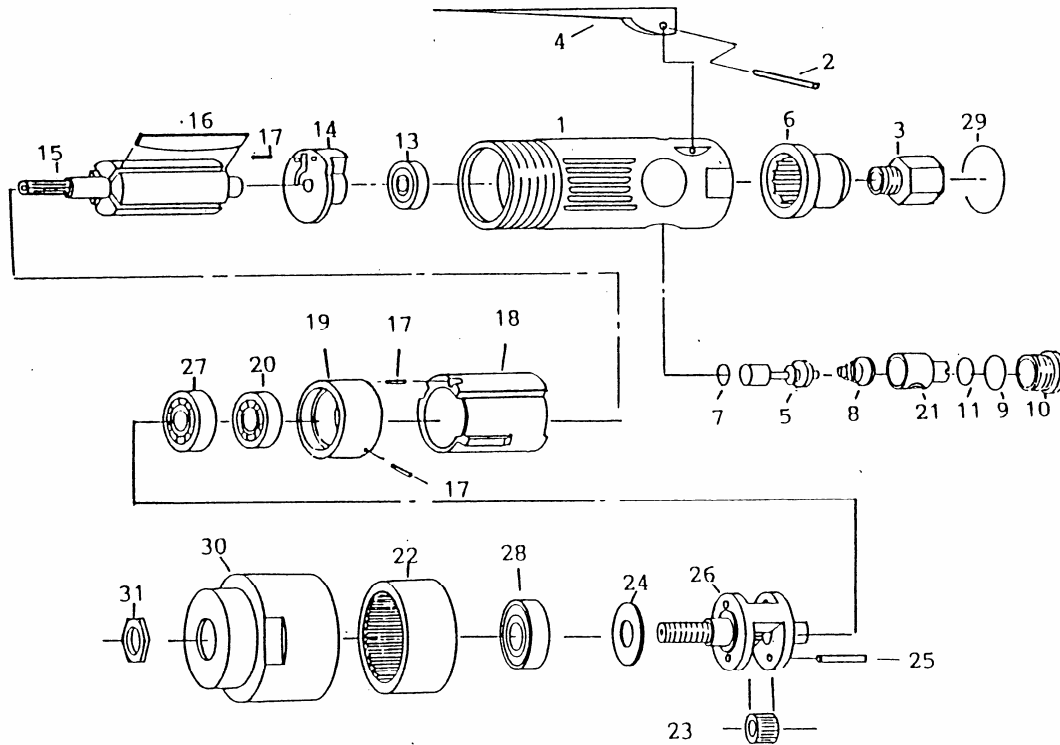


- NL** Boormachine
- GB** Drill
- D** Bohrmaschine
- F** Foreuse
- I** Trapani ad aria
- DK** Boremaskine
- N** Driller

- RC 217(A)**
- RC 217(A)**
- RC 217(A)**
- RC 217(A)**
- RC 217(A)**
- RC 217(A)**
- RC 217(A)**



2003-05



Index	Parts No.	Description	Quantity
1	RP053203	Motor housing	1
2	RPSM51802	Lever pin	1
3	RPSM51203	Air inlet	1
4	RP0820302SA	Throttle lever comp.	1
5	RPSM51805	Valve stem	1
6	RPSM54506	Exhaust deflector	1
7	RPOR3334	O-ring	1
8	RPSM51808	Valve spring	1
9	RPOR3713	O-ring	1
10	RPSM51810	Throttle valve plug	1
11	RPOR3953	O-ring	1
13	RPBB626ZZ	Ball bearing	1
14	RPSM51214	Rear end plate	1
15	RP053207	Rotor	1
16	RPSM51816	Rotor blade	4
17	RPSM51217	Pin	3
18	RPSM51218	Cylinder	1

Index	Parts No.	Description	Quantity
19	RP053211	Front end plate	1
20	RPBBEE3	Ball bearing	1
21	RPSM51821	Air regulator	1
22	RP053219	internal gear	1
23	RP053216	Planet gear	2
24	RP053213	Washer	1
25	RP053210	Pin	2
26	RP053215	Planet cage	1
27	RPBBEE4	Ball bearing	1
28	RPBB6000ZZ	Ball bearing	1
29	RP051229	Retaining ring	1
30	RP053022	Front housing	1
31	RP0022025	Chuck spacer	1
32	RA8648	Drill chuck (not shown)	1
32A	RA8655A	Chuck keyless (N.S.)	1
33	RA8650	Chuckkey (not shown)	1