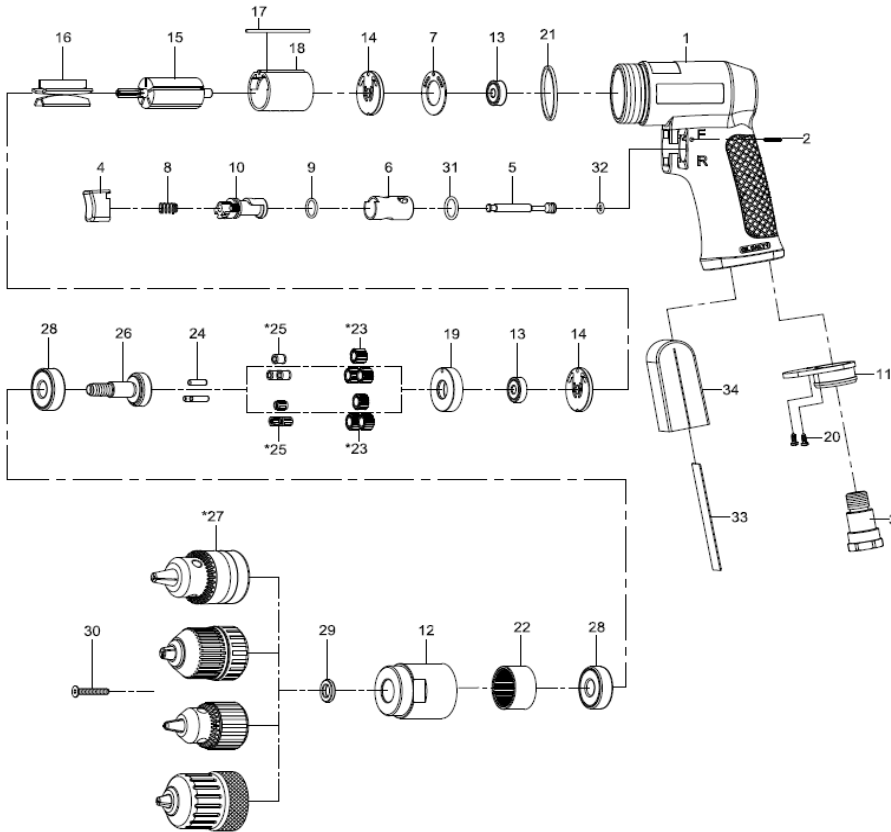


<b>NL</b>	<b>Boormachine</b>	<b>RC2110</b>
<b>GB</b>	<b>Drill</b>	<b>RC2110</b>
<b>D</b>	<b>Bohrmaschine</b>	<b>RC2110</b>
<b>F</b>	<b>Foreuse</b>	<b>RC2110</b>
<b>I</b>	<b>Trapani ad aria</b>	<b>RC2110</b>
<b>DK</b>	<b>Boremaskine</b>	<b>RC2110</b>
<b>N</b>	<b>Driller</b>	<b>RC2110</b>

2015



Index	Parts No.	Description	QTY	Index	Parts No.	Description	QTY
1	RPSM75750001	Motor housing	1	*23	RPSM8022311	Planet Gear	3
2	RPSM80202	Spring pin ( 2,5 *x 24L )	1		RPSM8022314	Planter Gear	3
3	RPSM75725303	Air inlet	1	24	RPSM30124	Pin (4x13,8L)	3
4	RPSM795804	Trigger	1	*25	RPSM80225	Bushing	3
5	RPSM8020512	Valve Stem	1	26	RPSM080245	Needle Bearing	3
6	RPSM80206	Reverse Bushing	1	27	RPSM70526	Work Spindle	1
7	RPSM80211	Motor Gasket	1		RPSM1003511	Standard Keyed Chuck (3/8")	1
8	RPSM75730008	Valve Spring	1		RPSM1003512	Standard Keyless Chuck (3/8)	1
9	RPSM80209	O-Ring (12*x1,6)	1		RPSM1003513	Industrial Keyed Chuck (3/8")	1
10	RPSM80210	Reverse Lever	1		RPSM1003514	Industrial Keyless Chuck (3/8")	1
11	RPSM70110	Exhaust Diffuser	1	28	RPSM080227	Ball Bearing (6201Z)	2
12	RPMS70534	Clamp Nut	1	29	RPSM70133	Washer	1
13	RPSM030113	Ball Bearing (626ZZ)	2	30	RPSM70530	Screw (M5*25L)	1
14	RPSM80214	End Plate	2	31	RPSM80247	O-Ring (13,8x2)	1
15	RPSM80215	Rotor	1	32	RPSM70107	O-Ring (4,8x1,9)	1
16	RPSM80216	Rotor Blades	5	33	RPSM75750007	Iron Sheet	1
17	RPSM8021713	Pin	1	34	RPSM75750020	Damping Material	1
18	RPSM8021822	Cylinder	1				
19	RPSM80219	Front End Plate	1				
20	RPSM40309	Screw (TS2,9)	2				
21	RPSM75725351	Decoration Ring	1				
22	RPSM80222	Internal Gear	2				

\* Optional part