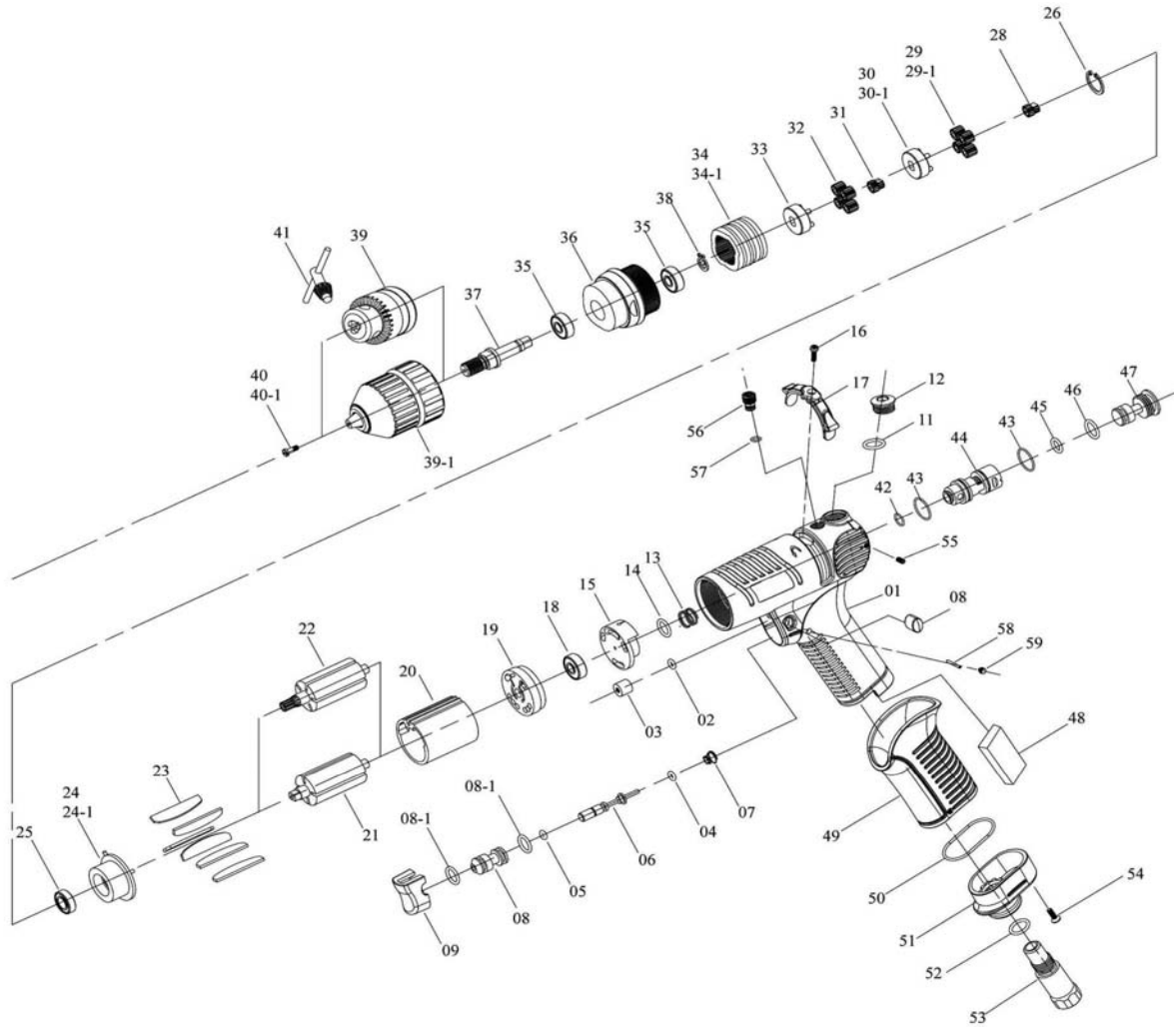




2008-11

- NL** Boormachine
- GB** Drill
- D** Bohrmaschine
- F** Foreuse
- I** Trapani ad aria
- DK** Boremaskine
- N** Driller

- RC 2020A**
- RC 2020A**
- RC 2020A**
- RC 2020A**
- RC 2020A**
- RC 2020A**
- RC 2020A**



No.	Parts No.	Description	Q'ty
1	RP5L2031	Pistol Housing [Red]	1
2	RP7Q2008	O Ring	1
3	RP2C2003	Blank Cap	1
4	RP7Q2006	O Ring	1
5	RP7Q6112	Valve O-Ring	1
6	RP6S2023	Valve Pin	1
7	RP6N2116	Cone Spring	1
8	RP6S2027	Valve Bushing	1
8-1	RP7Q2023	O Ring	2
9	RP5L2701	Button [Black]	1
10	RP5L2111	Cap	2
11	RP2Q5001	O Ring	1
12	RP2S2011	Screw Cap	1
13	RP6N2108	Spring	1
14	RP7Q2017	Valve O-Ring	1
15	RP6S2204	Valve	1
16	RP7S2107	Set Screw And Washer	1
17	RP2L3026	Switch [Black]	1
18	RP7S2001	Ball Bearing	1
19	RP1S3001-A	End Plate	1
20	RP1P3005	Cylinder	1
21	RP1S3046	Rotor [RC2020A]	1
22	RP1S3048	NVT	1
23	RP1P3051	Blade	6
24	RP1P3062	Front Plate [RC2020A]	1
24-1	RP1P3061	NVT	1
25	RP7S2002	Ball Bearing	1
26	RP6N2020	NVT	1
28	RP1P2275	18T Main Gear [RC2020A]	1
29	RP1P2110	12T Plant Gear [RC2020A]	4
29-1	RP1P2105	NVT	3
30	RP1P2291	Third Gear Cage [RC2020A]	1
30-1	RP1P5112	NVT	1

No.	Parts No.	Description	Q'ty
31	RP1P5101	14T Main Gear [RC2020A]	1
32	RP1P2131	14T Plant Gear [RC2020A]	4
33	RP1P2294	Fourth Gear Cage [RC2020A]	1
34	RP1S2069	Internal Gear [RC2020A]	1
34-1	RP1P2292	NVT	1
35	RP7S2010	Ball Bearing	2
36	RP5A5352	Clutch Housing	1
37	RP3S5042	Anvil	1
38	RP6N2081	C Ring	1
39	RP7S3111	NVT	1
39-1	RA8658N10	3/8" Drill Chuck [RC2020A]	1
40	RP7S2118	NVT	1
40-1	RP7S2117	Left Screw [RC2020A]	1
41	RP5L3104	NVT	1
42	RP7Q2008	O Ring	1
43	RP7Q6104	O Ring	2
44	RP6S2101	Valve Ring	1
45	RP7Q6103	O Ring	1
46	RP2Q5001	O Ring	1
47	RP2S2013	Screw Cap	1
48	RP2P3040	First Silencer	1
49	RP5L3201	Pistol Cover	1
50	RP7Q2015	O Ring	1
51	RP2A3004	Exhaust Deflector	1
52	RP2Q5001	O Ring	1
53	RP2S2050	Air Inlet Bushing	1
54	RP7S2115	Screw	1
55	RP7S2150	Screw	2
56	RP7S2122	Screw	1
57	RP7Q2020	O Ring	1
58	RP7S5205	Pin	1
59	RP7S2113	Screw	2