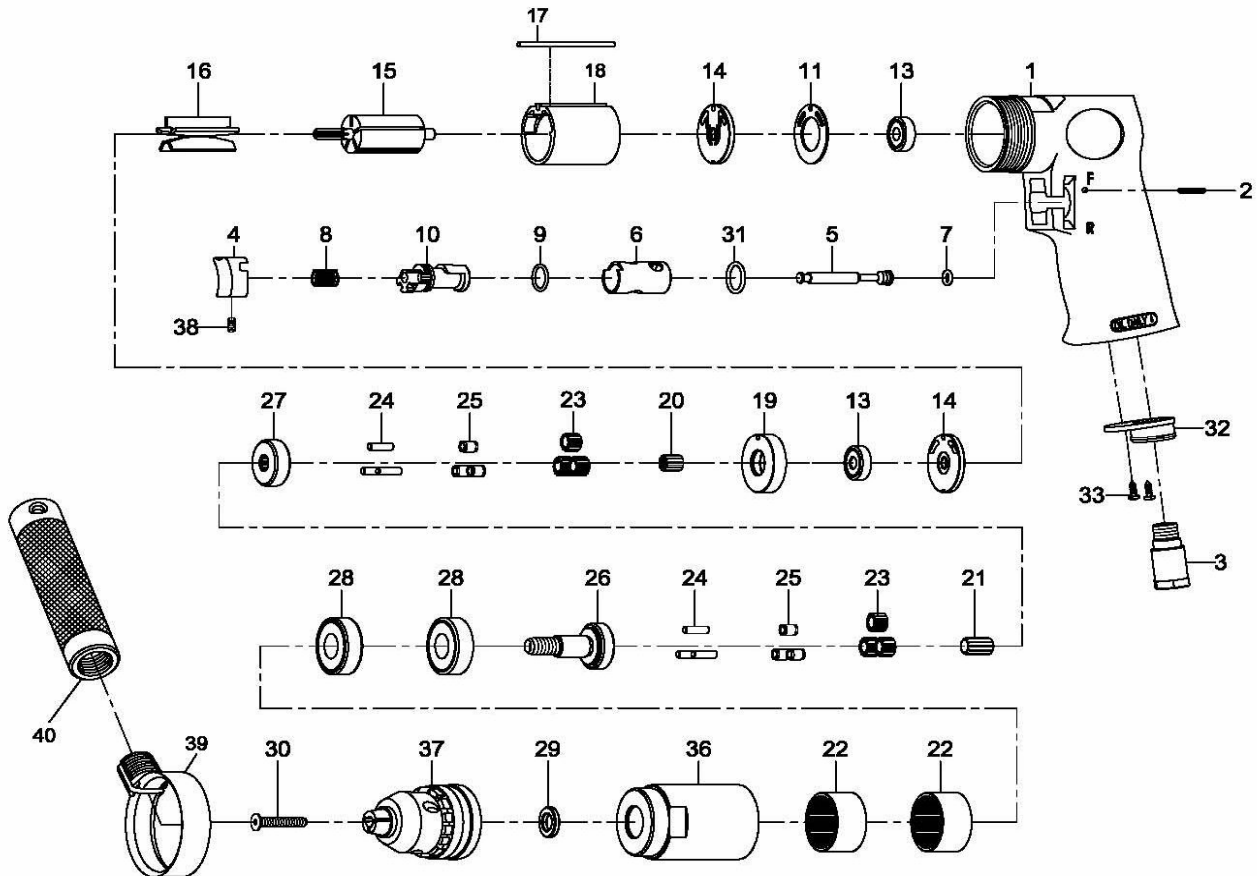


- NL** Boormachine
- GB** Drill
- D** Bohrmaschine
- F** Foreuse
- I** Trapani ad aria
- DK** Boremaskine
- N** Driller

- RC 214(A)**
- RC 214(A)**
- RC 214(A)**
- RC 214(A)**
- RC 214(A)**
- RC 214(A)**
- RC 214(A)**



2012-01



Index	Parts No.	Description	Quantity
1	RPSM70401	Motor housing	1
2	RP261L1438	Pin (2.5x24L)	1
3	RPSM72503	Air inlet	1
4	RPSM72504	Trigger	1
5	RPSM72505	Valve stem	1
6	RPSM72506	Reverse bushing	1
7	RPOR23385	O-ring (4.8x1.9)	1
8	RPSM72508	Valve spring	1
9	RPOR131625	O-ring (12x1.6)	1
10	RPSM72510	Reverse lever	1
11	RPSM72511	Motor gasket	1
13	RPBB626ZZ	Ball bearing	2
14	RPSM72514	End plate	2
15	RPSM72515	Rotor	1
16	RPSM72516	Rotor blade	5
17	RPSM72517	Pin (2.5x55L)	1
18	RPSM80218-22	Cylinder	1
19	RPSM72519	Spacer	1
20	RPSM81345	Pinion gear	1
21	RPSM81351	Center gear	1

Index	Parts No.	Description	Quantity
22	RPSM72522	Internal gear	2
23	RPSM81323	Planet gear	6
24	RPSM81324	Pin (4x13.8L)	6
25	RPSM81325	Bushing	6
26	RPSM70426	Work spindle	1
27	RPSM81350	Reduction spindle	1
28	RPBB6201ZZ	Ball bearing	2
29	RP0022025	Chuck spacer	1
30	RPSM70430	Chuck screw (M5x30L)	1
31	RPOR24479	O-ring (13.8x2)	1
32	RPSM72532	Exhaust diffuser	1
33	RPSM72533	Screw	2
36	RPSM70436	Clamp nut	1
37	RA8649	Drill chuck	1
37A	RA8655N13	Chuck keyless NS	1
38	RPES504X08	Set screw (M4x8L)	1
39	RPSM70439	Retainer	1
40	RPSM70440	Handle	1
	RA8651	Chuck key NS	1
	RAH300	Exhaust hose NS	Option

NS = Not shown