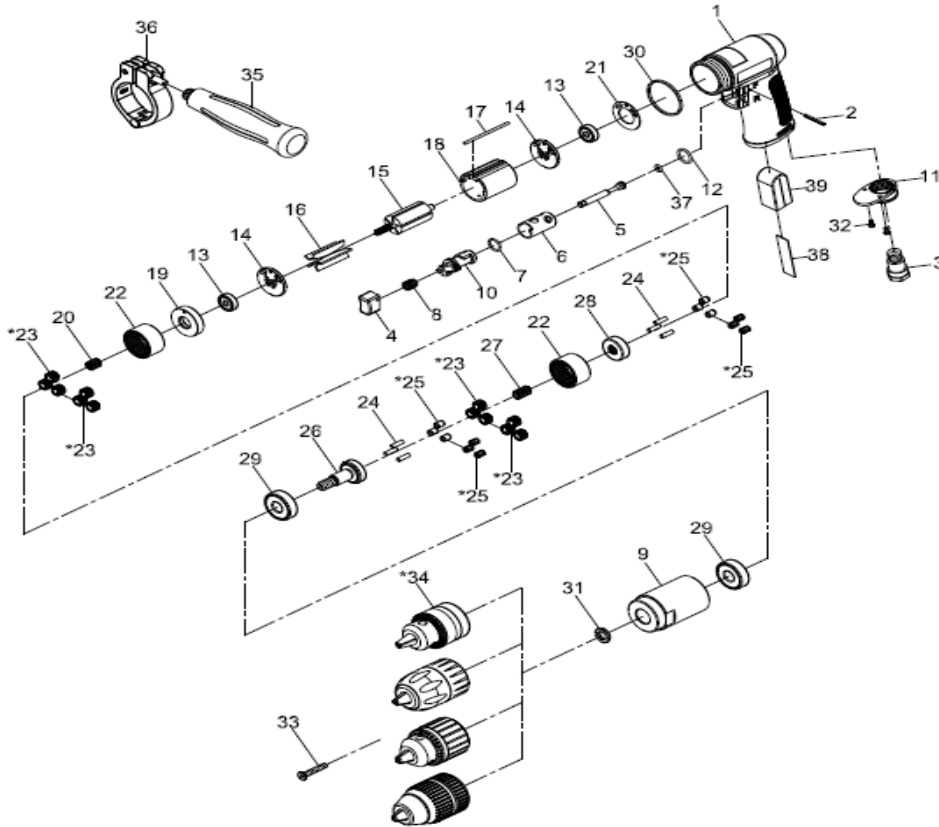


<b>NL</b>	<b>Boormachine</b>	<b>RC2113</b>
<b>GB</b>	<b>Drill</b>	<b>RC2113</b>
<b>D</b>	<b>Bohrmaschine</b>	<b>RC2113</b>
<b>F</b>	<b>Foreuse</b>	<b>RC2113</b>
<b>I</b>	<b>Trapani ad aria</b>	<b>RC2113</b>
<b>DK</b>	<b>Boremaskine</b>	<b>RC2113</b>
<b>N</b>	<b>Driller</b>	<b>RC2113</b>

2015



Index	Parts No.	Description	QTY	Index	Parts No.	Description	QTY
1	RPSM75750001	Motor housing	1	*23	RPSM7042311	Planet Gear	6
2	RPSM80202	Spring pin ( 2,5 x 24L )	1		RPSM7042314	Planter Gear	6
3	RPSM75725303	Air inlet	1	24	RPSM30124	Pin (4x13,8L)	6
4	RPSM795804	Trigger	1		RPSM70425	Bushing	6
5	RPSM8020512	Valve Stem	1	*25	RPSM070428	Needle Bearing	6
6	RPSM80206	Reverse Bushing	1	26	RPSM70426	Work Spindle	1
7	RPSM80209	O-ring (12X1,6)	1	27	RPSM70421	Center Gear	1
8	RPSM75730008	Valve Spring	1	28	RPSM70427	Reduction Spindle	1
9	RPSM70436	Clamp Nut	1	29	RPSM080227	Ball bearing (6201Z)	2
10	RPSM80210	Reverse Lever	1	30	RPSM75725351	Decoration Ring	1
11	RPSM70110	Exhaust Diffuser	1	31	RPSM70133	Washer	1
12	RPMS80247	O-ring (13,8X2)	1	32	RPSM40309	Screw (TS2,9)	2
13	RPBB626ZZ	Ball Bearing (626ZZ)	2	33	RPSM7043012	Chuck Screw (M5x30L)	1
14	RPSM80214	End Plate	2		RPSM1003311	Standard Keyed Chuck (1/2")	1
15	RPSM80215	Rotor	1	*34	RPSM1003312	Standard Keyless Chuck (1/2")	1
16	RPSM80216	Rotor Blades	5		RPSM1003313	Industrial Keyed Chuck (1/2")	1
17	RPSM8021713	Pin	1		RPSM1003314	Industrial Keyless Chuck (1/2")	1
18	RPSM8021822	Cylinder	1	35	RPSM822340	Handle	1
19	RPSM80219	Front End Plate	1	36	RPSM757251390 001S	Retainer	1
20	RPSM70420	Pinion Gear	1	37	RPSM70107	O-Ring (4,8x1,9)	1
21	RPSM80211	Motor Gasket	1	38	RPSM75750007	Iron Sheet	1
22	RPSM80222	Internal Gear	2	39	RPSM75750020	Damping Material	1

\* Optional part