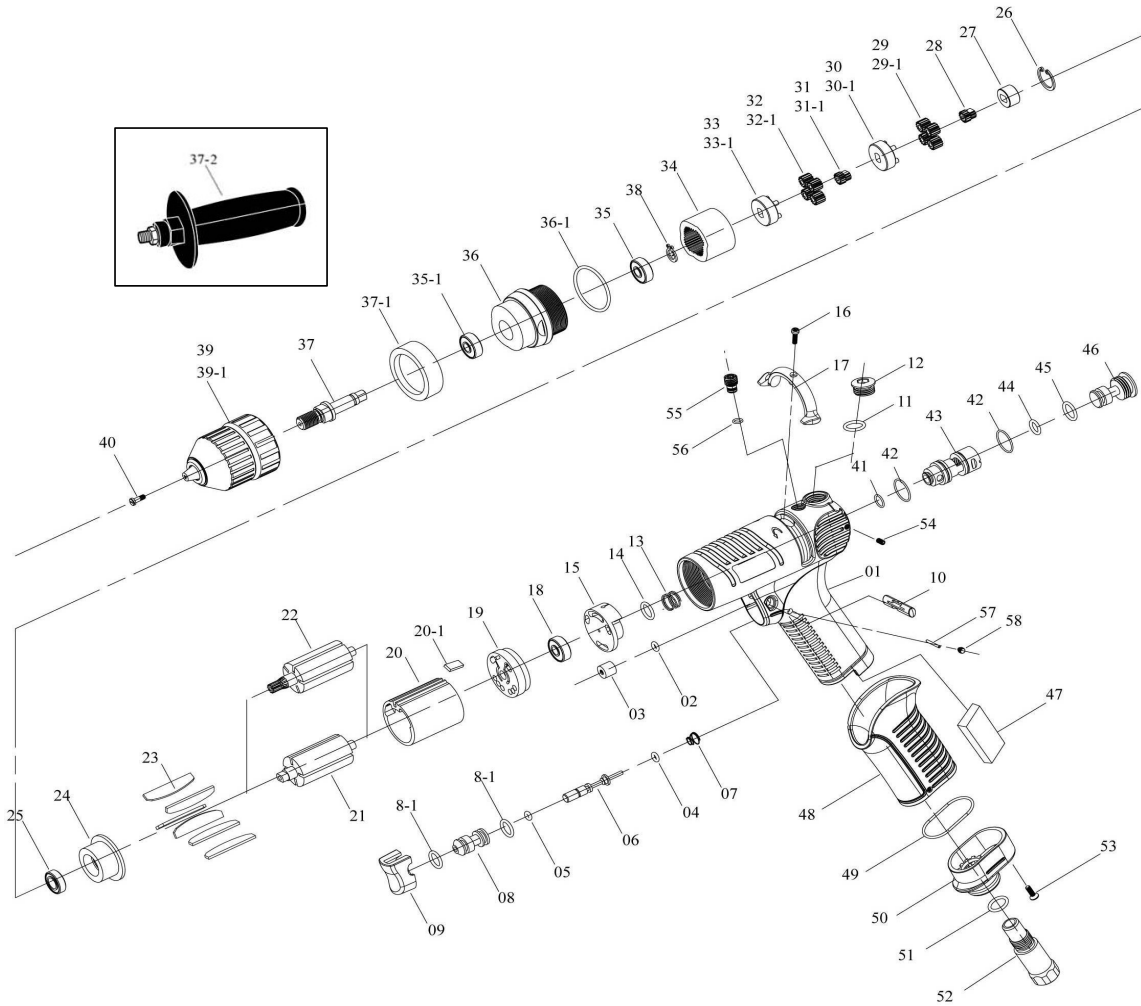




2011-11

- NL** Boormachine
- GB** Drill
- D** Bohrmaschine
- F** Foreuse
- I** Trapani ad aria
- DK** Boremaskine
- N** Driller

- RC 2021A-2022A
- RC 2021A-2022A
- RC 2021A-2022A
- RC 2021A-2022A
- RC 2021A-2022A
- RC 2021A-2022A
- RC 2021A-2022A



No.	Parts No.	Description	Q'ty
1	RP5L2030	Pistol Housing [Red]	1
2	RP7Q2008	O Ring	1
3	RP2C2003	Blank Cap	1
4	RP7Q2006	O Ring	1
5	RP7Q6112	Valve O-Ring	1
6	RP6S2023	Valve Pin	1
7	RP6N2116	Cone Spring	1
8	RP6S2027	Valve Bushing	1
8-1	RP7Q2023	O Ring	2
9	RP5L2701	Button [Black]	1
10	RP5L2111	Cap	2
11	RP2Q5001	O Ring	1
12	RP2S2011-AL	Screw Cap	1
13	RP6N5006	Spring	1
14	RP7Q2011	Valve O-Ring	1
15	RP6S6106	Valve	1
16	RP7S2107	Set Screw And Washer	1
17	RP2L6026	Switch [Black]	1
18	RP7S5001	Ball Bearing	1
19	RP1S6001-A	End Plate	1
20	RP1P6005	Cylinder	1
20-1	RP2S2023	Key	1
21	RP1S6048	NVT	1
22	RP1S6047	10T Rotor [RC2021A, RC2022A]	1
23	RP1P6051	Blade	6
24	RP1P6063	Front Plate	1
25	RP7S2002	Ball Bearing	1
26	RP6N2020	C Ring [RC2021A, RC2022A]	1
27	RP1S3050	NVT	1
28	RP1P2271	NVT	1
29	RP1P2102	NVT	7
29-1	RP1P2101	15T Plant Gear [RC2021A, RC2022A]	4
30	RP1P6294	NVT	1
30-1	RP1P3280	Fifth Gear Cage [RC2021A, RC2022A]	1
31	RP1G6271	NVT	1

No.	Parts No.	Description	Q'ty
31-1	RP1G6090	14T Main Gear [RC2021A, RC2022A]	1
32	RP1P6111	NVT	7
32-1	RP1P6130	14T Plant Gear [RC2021A, RC2022A]	4
33	RP1P6295	NVT	1
33-1	RP1P6288-1	Fourth Gear Cage [RC2021A, RC2022A]	1
34	RP1S2061	Internal Gear	1
35	RP7S2010	Ball Bearing	1
35-1	RP7S2008	Ball Bearing	1
36	RP5A5355	Clutch Housing	1
36-1	RP2Q2003	O Ring	1
37	RP3S5042	Anvil [RC2021A]	1
	RP3S5044	Anvil [RC2022A]	1
37-1	RP7S3116	Aluminum Ring [RC2022A]	1
37-2	RP7S3120ASS	Handle (incl.screw+nut) [RC2022A]	1
38	RP6N2081	C Ring	1
39	RA8658N10	3/8" Drill Chuck [RC2021A]	1
39-1	RA8658N13	1/2" Drill Chuck [RC2022A]	1
40	RP7S2117	Left Screw	1
41	RP7Q2008	O Ring	1
42	RP7Q6104	O Ring	2
43	RP6S2101	Valve Ring	1
44	RP7Q6103	O Ring	1
45	RP2Q5001	O Ring	1
46	RP2S2013	Screw Cap	1
47	RP2P3040	First Silencer	1
48	RP5L6201	Pistol Cover	1
49	RP2A2003	O Ring	1
50	RP2A6002	Exhaust Deflector	1
51	RP2Q5001	O Ring	1
52	RP2S2050	Air Inlet Bushing	1
53	RP7S2115	Screw	1
54	RP7S2113	Screw	2
55	RP7S2122	Screw	1
57	RP7S205	Pin	1
58	RP7S2113	Screw	2