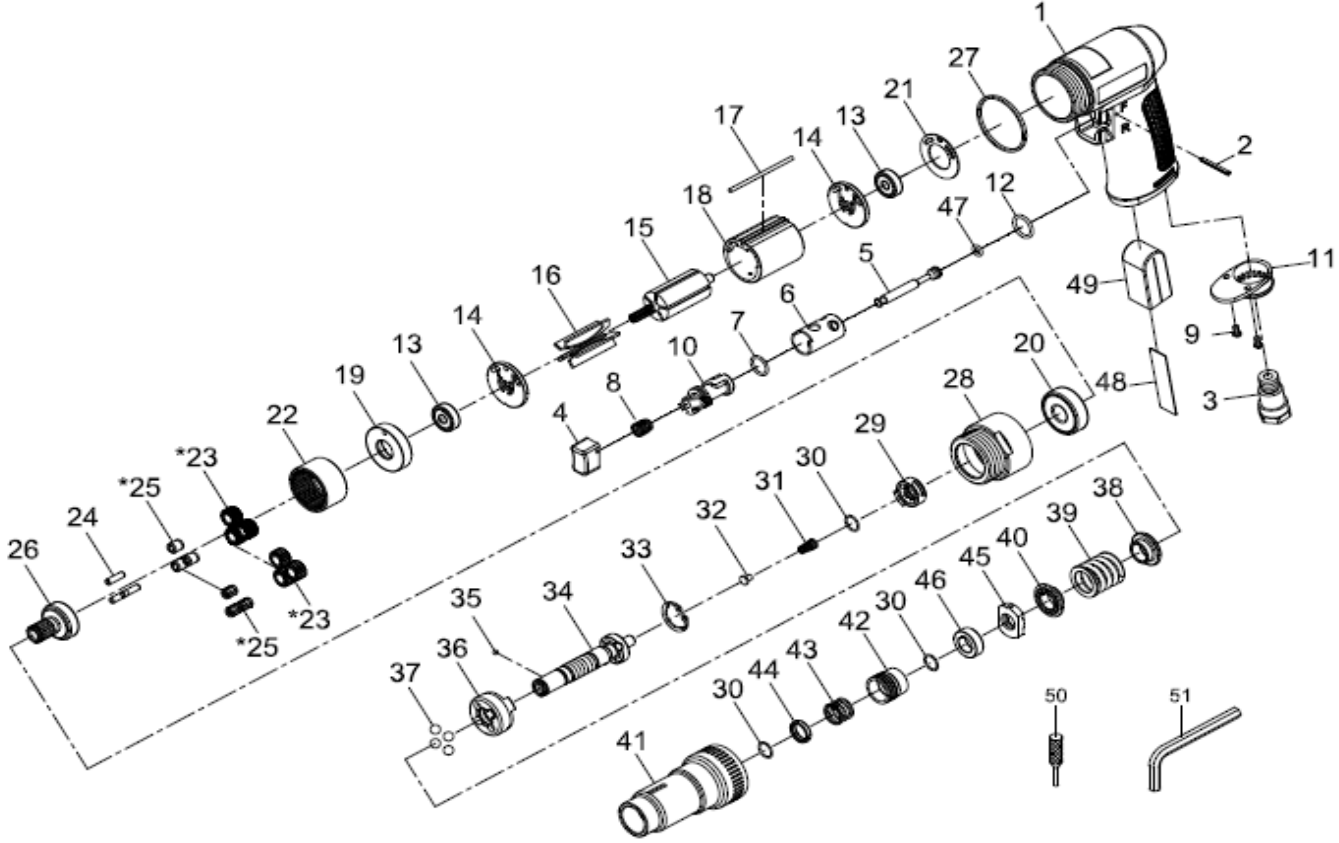


- NL** Schroevendraaier
- GB** Screwdriver
- D** Drehschrauber
- F** Visseuse
- I** Giraviti
- DK** Skruetrækker
- N** Skrutrekker

RC3418  
RC3418  
RC3418  
RC3418  
RC3418  
RC3418  
RC3418



2015



Index	Parts no.	Description	Q'ty
1	RPSM75750001	Motor Housing	1
2	RPSM80202	Spring Pin (2,5x24L)	1
3	RPSM75725303	Air Inlet	1
4	RPSM795804	Trigger	1
5	RPSM8020512	Valve Stem	1
6	RPSM80206	Reverse Bushing	1
7	RPSM80209	O-Ring (12x1,6)	1
8	RPSM75730008	Valve Spring	1
9	RPSM40309	Screw (TS2,9)	2
10	RPSM80210	Reverse Lever	1
11	RPSM70110	Exhaust Diffuser	1
12	RPSM80247	O-Ring (13,8x2)	1
13	RPSM030113	Ball Bearing (626ZZ)	2
14	RPSM80214	End Plate	2
15	RPSM80215	Rotor	1
16	RPSM80216	Rotor Blades	5
17	RPSM8021713	Pin	1
18	RPSM8021822	Cylinder	1
19	RPSM80219	Front End Plate	1
20	RPSM080227	Ball Bearing (6201Z)	1
21	RPSM80211	Motor Gasket	1
22	RPSM80222	Internal Gear	1
23	RPSM8022311	Planet Gear	3
	RPSM8022314	Planet Gear	3
24	RPSM30124	Pin (4x13,8L)	3
25	RPSM80225	Bushing	3
	RPSM080245	Needle Bearing	3

Index	Parts No.	Description	Q'ty
26	RPSM80226	Work Spindle	1
27	RPSM75725351	Decoration Ring	1
28	RPSM80228	Clamp Nut	1
29	RPSM80229	Drive Dog	1
30	RPSM80230	Retainer Ring	3
31	RPSM80220	Spring	1
32	RPSM80221	Spring Guide	1
33	RPSM80231	Snap Ring (RTW21)	1
34	RPSM80232	Cam Spindle	1
35	RPSM40145	Steel Ball (1/8")	1
36	RPSM80234	Clutch	1
37	RPSM80235	Steel Ball (1/4")	4
38	RPSM80236	Thrust Washer	1
39	RPSM802F37	Spring	1
40	RPSM80238	Washer	1
41	RPSM802F41	Clutch Housing	1
42	RPSM80242	Ball Retainer	1
43	RPSM80243	Spring	1
44	RPSM80244	Washer	1
45	RPSM802F39	Adjust Nut	1
46	RPSM80240	Spacer	1
47	RPSM70107	O-Ring (4,8x1,9)	1
48	RPSM75750007	Iron Sheet	1
49	RPSM75750020	Damping Material	1
50	RPSM600324	Key	1
51	RPSM10022	Hex. Wrench (1/4)	1

\*Optional parts