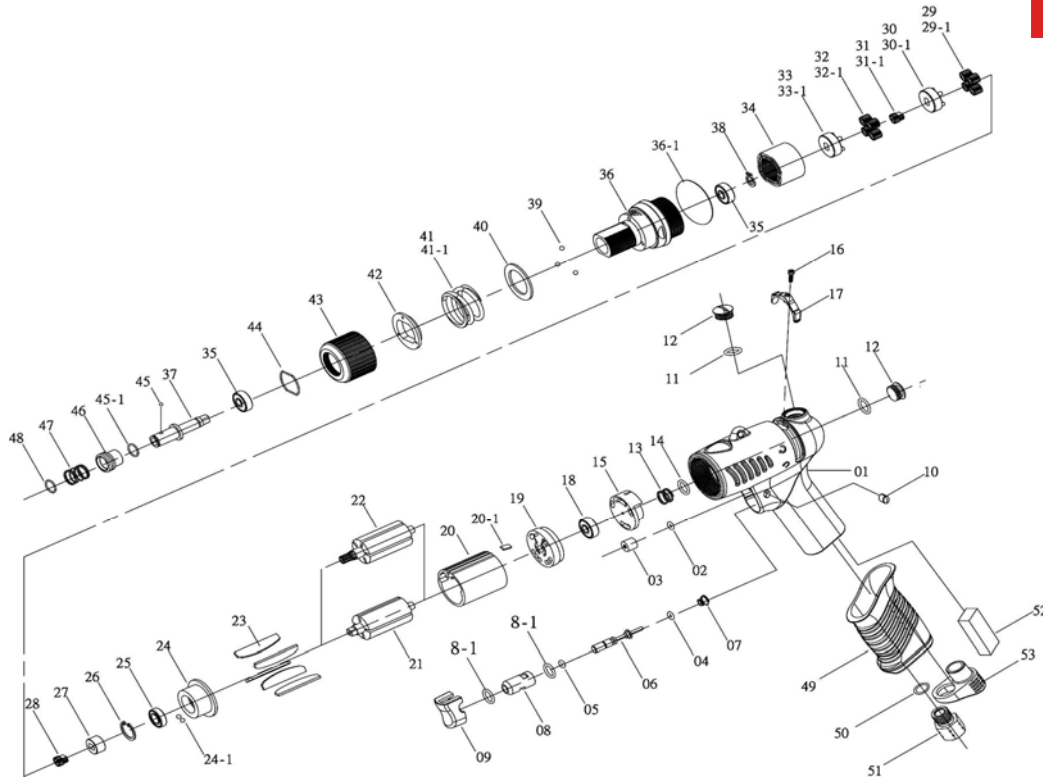


- NL** Schroevendraaier
- GB** Screwdriver
- D** Drehschrauber
- F** Visseuse

RC3403-3405
RC3403-3405
RC3403-3405
RC3403-3405



2008-11



No.	Parts No.	Description	Q'ty
1	RP5L2027	Pistol Housing	1
2	RP7Q2008	O Ring (5x1)	1
3	RP2C2003	Blank Cap	1
4	RP7Q2006	O Ring (3.5x2)	1
5	RP7Q6112	Valve O-Ring (3x1.5)	1
6	RP6S2023	Valve Pin	1
7	RP6N2106	Cone Spring (0.45)	1
8	RP6S2024	Valve Bushing	1
8-1	RP7Q2009	O Ring (8x1)	2
**	RP1A1018	ASSY HOUSING (parts 1 to 8-1)	1
9	RP5L2701	Button	1
10	RP5L2116	Cap	2
11	RP2Q5001	O Ring (P10)	2
12	RP2S2011	Screw Cap	2
13	RP6N5006	Spring (1.1)	1
14	RP7Q2011	Valve O-Ring	1
15	RP6S6106	Valve	1
16	RP7S2107	Set Screw (M2.6x12) And Washer	1
17	RP2L6011	Switch	1
18	RP7S5001	Ball Bearing (606ZZ)	1
19	RP1S6001-A	End Plate	1
20	RP1P6005	Cylinder	1
20-1	RP2S2023	Key	1
21	RP1S6048	Rotor RC3403	1
22	RP1S6047	Rotor RC3405	1
23	RP1P6051	Blade	6
24	RP1P6062	Front Plate	1
24-1	RP7S2102	Ball (2.0)	36
25	RP7S2011	Ball Bearing (688ZZ)	1
26	RP6N2020	C Ring RC3405	1
27	RP1S3050	Connect RC3403	1
28	RP1P2271	First Main Gear RC3403	1
29	RP1P2102	First Plant Gear RC3403	7

No.	Parts No.	Description	Q'ty
29-1	RP1P2101	First Plant Gear RC3405	4
30	RP1P6294	First Gear Cage RC3403	1
30-1	RP1P3280	First Gear Cage RC3405	1
31	RP1G6271	Second Main Gear RC3403	1
31-1	RP1G6090	Second Main Gear RC3405	1
32	RP1P6111	Second Plant Gear RC3403	7
32-1	RP1P6130	Second Plant Gear RC3405	4
33	RP1P6295	Second Gear Cage RC3403	1
33-1	RP1P6288-1	Second Gear Cage RC3405	1
34	RP1S3157	Internal Gear	1
35	RP7S2010	Ball Bearing (688ZZ)	2
36	RP5A5354	Clutch Housing	1
36-1	RP2Q2003	O Ring (23x2)	1
37	RP3S5040	Anvil (6.35Hex)	1
38	RP6N2081	C Ring	1
39	RP0530146	Ball (4.0)	3
40	RP2S5233	Washer	1
41	RP5N5210	Torque Spring [4.5] RC3403	1
41-1	RP6N5211	Torque Spring [5.0] RC3405	1
42	RP3S3221	Regulation Washer	1
43	RP3A6301	Torque Ring	1
44	RP6N3301	C Ring	1
45	RP7S3107	Ball (2.38)	1
45-1	RP3S2102	Bushing (3.8)	1
46	RP5S2009	Bit Slide Sleeve	1
47	RP6N2110	Spring (0.6)	1
48	RP6N2001	C Ring (Pull)	1
49	RP5L2201	Pistol Cover	1
50	RP2Q5001	O Ring (P10)	1
51	RP2S2005	Air Inlet Bushing (PT)	1
51	RP2S2008	Air Inlet Bushing (PS) (For Italy)	1
52	RP2P3040	First Silencer	1
53	RP2P3025	Second Silencer	1