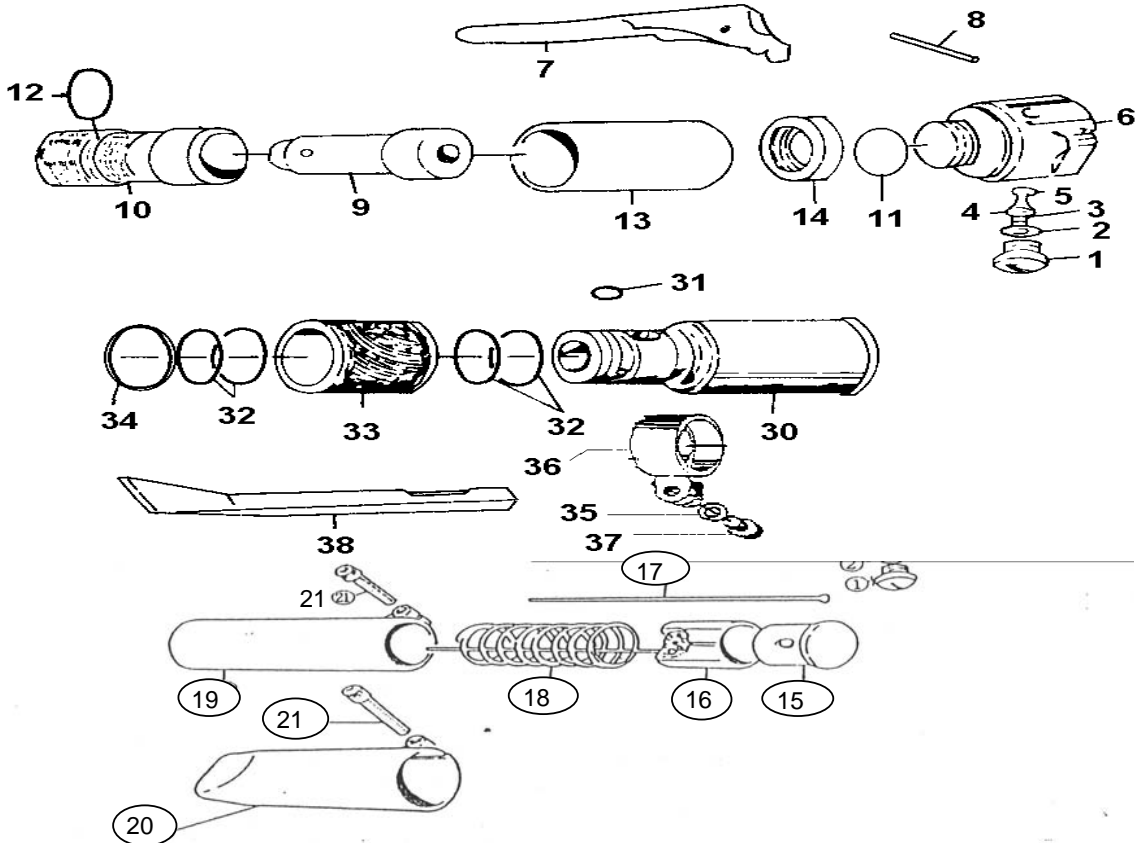


- NL** Hakhamer/ Naaldbikhamer RC 4117(A)
- GB** Hammer/ Needle scaler RC 4117(A)
- D** Meisselhammer / Nadel-Ent RC 4117(A)
- F** Marteaux / Derouilleur RC 4117(A)
- I** Scalpelli ad aria / Disossida RC 4117(A)
- DK** Mejselhamre Nalehamre RC 4117(A)
- N** Meiselhammer / Nalebanker RC 4117(A)



2013-10



Index	Parts No.	Description	Quantity
1	RP411501	Valve cap	1
2	RP411502	O-ring valve cap	1
3	RP411503	Valve spring	1
4	RP411504	Valve stem	1
5	RP411505	O-ring valve seat	1
6	RP411706	Valve body	1
7	RP411507	Throttle lever	1
8	RP411508	Roll pin	1
9	RP411509	Piston	1
10	RP411710	Cylinder	1
11	RP411711	O-ring	1
12	RP411712	O-ring	1
13	RP411713	Piston sleeve	1
14	RP411714	Washer	1
15	RP411715	Anvil	1
16	RA411503	Needle holder 3mm	1
16A	RA411502	Needle holder 2mm	1

Index	Parts No.	Description	Quantity
17	RA4431107SET	Needle set 19 x 3mm	1
17A	RA4421107SET	Needle set 51 x 2mm	1
18	RP411519	Spring compression	1
19	RP411520	intermediate tube	1
20	RP411521	Front tube	1
21	RP411522	Cap head screw	2
22	RP411525	washer	2
30	RA411510	Cylinder body 30T/M 34	1
31	RP411731	Steel ball	1
32	RP411732	O-ring	4
33	RP411733	Chissel cover	1
34	RP411734	Snap ring (RC4117A)	1
35	RA411735	Washer	1
36	RA411511	Clampset +35 +37	1
37	RP411737	Hex socket bolt	1
38A	RA411520	Chissel point	1
38B	RA411525	Chissel 30 mm	1
38C	RA411530	Chissel 25 mm	1