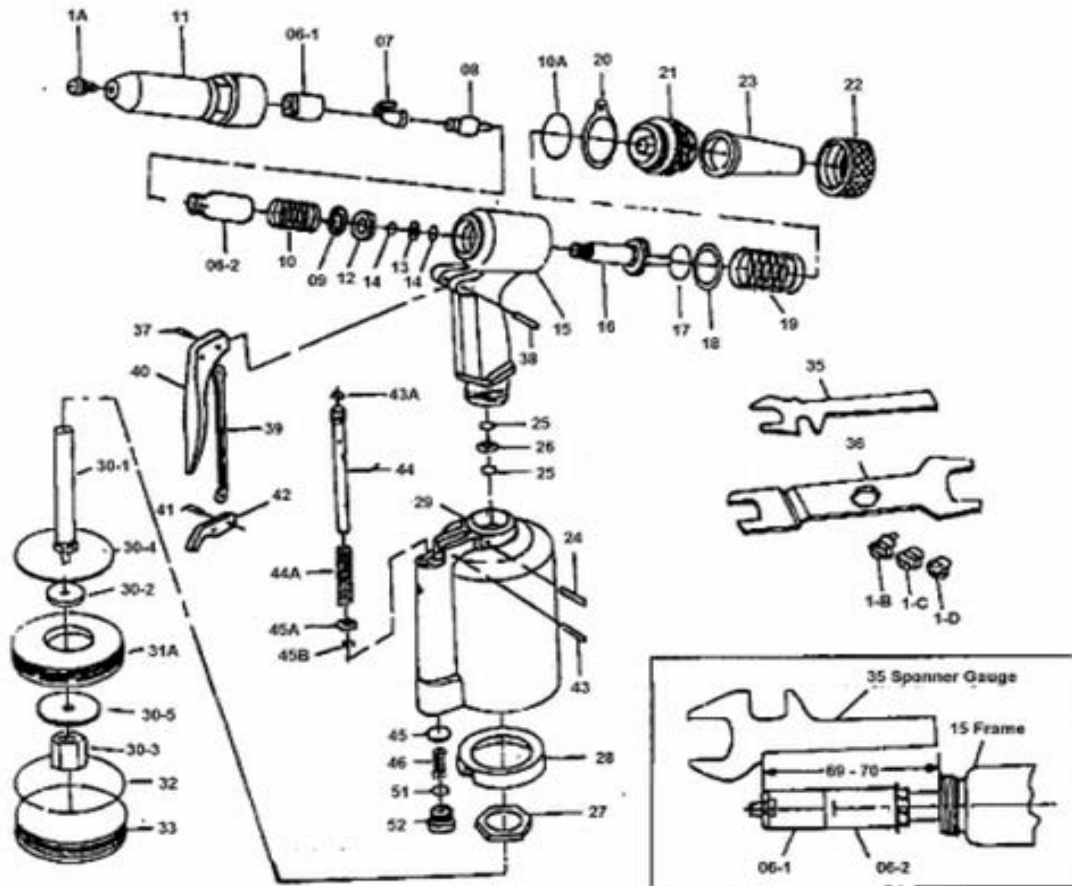


- NL** Blindklingnageltang
- GB** Air Riveter
- D** Blindnietgerät
- F** Riveteuse
- I** Chiodatrici
- DK** Blindnietepistole
- N** Blindnagleverktøy

- RC 191
- RC 191
- RC 191
- RC 191
- RC 191
- RC 191
- RC 191

2003-05



Index	Parts	Description	Quantity
1A	RP19101A	Nosepiece 3/16" 4,76	1
1B	RP19101B	Nosepiece 5/32" 3,97	1
1C	RP19101C	Nosepiece 1/8" 3,17	1
1D	RP19101D	Nosepiece 3/32" 2,38	1
06-1	RP191061	Jaw case front part	1
06-2	RP191062	Jaw case end part	1
07	RA191	Jaw	2
08	RP19108	Jaw pusher	1
09	RP19109	Washer ring	1
10	RP19110	Jaw pusher spring	1
10A	RPOR41219	O-ring	1
11	RP19111	Frame head	1
12	RP19112	Lock nut	1
13	RP19113	Back up ring	1
14	RPOR490	O-ring	2
15	RP19115	Frame	1
16	RP19116	Oil piston	1
17	RPOR4161	O-ring oil piston	1
18	RP19118	Back up ring	1
19	RP19119	Return spring	1
20	RP19120	Hanging clip	1
21	RP19121	Frame cap	1
22	RP19122	Frame cap nut	1
23	RP19123	Safety cap	1
24	RP19124	Setting screw pin	1
25	RPOR490	O-ring	2
26	RP19113	Back up ring	1
27	RP19127	Frame lock nut	1

Index	Parts	Description	Quantity
28	RP19128	Rubber cushion	1
29	RP19129	Air cylinder	1
30-1	RP191301	Air piston stem	1
30-2	RP191302	Air piston	1
30-3	RP191303	Air piston lock nut	1
30-4	RP191304	Iron plate	1
30-5	RP191305	Iron plate	1
31A	RP19131A	Air piston ring	1
32	RP19132	Cylinder o-ring	1
33	RP19133	Cylinder cap	1
35	RP70634	Spanner	1
36	RP19136	Spanner	1
37	RP0731939	Connector Incl. nr. 41	1
38	RP0175B05	Spring pin	1
39	RP19139	Trigger rod	1
40	RP19140	Trigger	1
41		see Nr. 37	1
42	RP19142	Trigger lever	1
43	RP0175B05	Spring pin	1
43A	RP19143A	O-ring	1
44	RP19144	Valve pusher	1
44A	RP19144A	Valve spring	1
45	RP19145	Valve	1
45A	RP19145A	Valve collar	1
45B	RPOR41623	Valve cap o-ring	1
46	RP19146	Valve spring	1
51	RP19151	Valve cap o-ring	1
52	RP19152	Valve cap	1