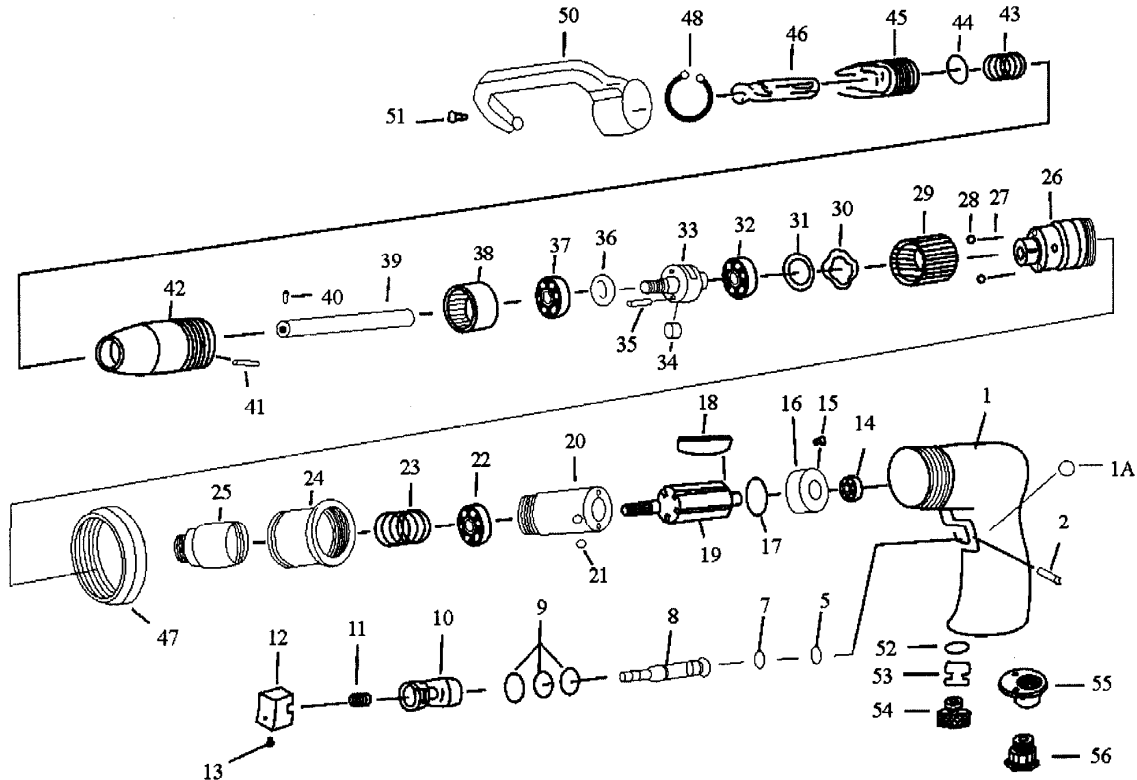


- NL** Puntlasfreesmachine
- GB** Spottle tool
- D** Schweisspunktfräse
- F** Dépointeuse
- I** Staccapunti
- DK** Punktsvejsefræser
- N** Punktbormaskin

- RC 355**
- RC 355**
- RC 355**
- RC 355**
- RC 355**
- RC 355**
- RC 355**



2008-12



Index	Parts No.	Description	Quantity
1	RPSM317HN01	Housing	1
1A	RPSMSB-008	Ball 6,35mm	1
2	RPSMNR30278	Pin	1
5	RPSM317005	O-ring	1
7	RPSMORP0035	O-ring	1
8	RPSM317008	Valve stem	1
9	RPSMORP0140	O-ring	3
10	RPSM317010	Valve bushing	1
11	RPSM305021	Spring	1
12	RPSM317012	Trigger	1
13	RPSMSS0404A	Set screw	1
14	RPBB696ZZ	Ball bearing	1
15	RPSMB20312A	Set screw	1
16	RPSM317HN16	Rear end plate	1
17	RPSM317HN17	O-ring	1
18	RPSM317016	Rotor blades	5
19	RPSM317017	Rotor	1
20	RPSM317HN20	Cylinder	1
21	RPSMSB050M	Ball 5mm	1
22	RPBB608ZZ	Ball bearing	1
23	RPSM317HN23	Spring	1
24	RPSM317HN24	Clamp nut	1
25	RPSM317HN25	Gear case	1
26	RPSM317HN26	Gear housing	1
27	RPSM309041	Spring	2
28	RPSMSB005	Ball 4mm	2
29	RPSM317033	Adjusting nut	1
30	RPSM317034	Wave washer	2
31	RPSMSTW022	Retaining ring	1

Index	Parts No.	Description	Quantity
32	RPSMBBR8	Ball bearing	1
33	RPSM317024	Gear cage	1
34	RPSM317025	Gear	2
35	RPSM317026	Pin	2
36	RPSM317027	Washer	1
37	RSMBBR62	Ball bearing	1
38	RPSM317029	Internal gear	1
39	RPSM317036	Bit Holder	1
40	RPES05X05	Set screw	1
41	RPES04X06	Set screw	1
42	RPSM317039	Attachment	1
43	RPSM317040	Spring	1
44	RPSM317041	Retainer	1
45	RPSM317042	Supporter	1
46	RA350F06	Bit 6mm	1
46A	RA350F08	Bit 8mm	1
47	RPSM317HN47	Lock nut	1
48	RPSM317HN48	Retaining ring	1
50	RPSM317HN50	Arm 2"	1
50A	RPSM317HN50A	Arm 3"	1
50B	RPSM317HN50B	Arm 5,5"	1
51	RPECS04X08	Screw M4X8	1
52	RPSMORP0180	O-ring	1
53	RPSM317045	Muffler nut	1
54	RPSM317046	Muffler	1
55	RPSM317047	Muffler retainer	1
56	RPSM306003	Air inlet	1
57	RPSM317049	Service wrench	1

