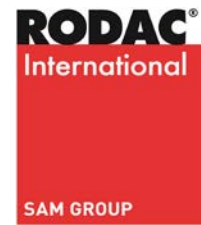
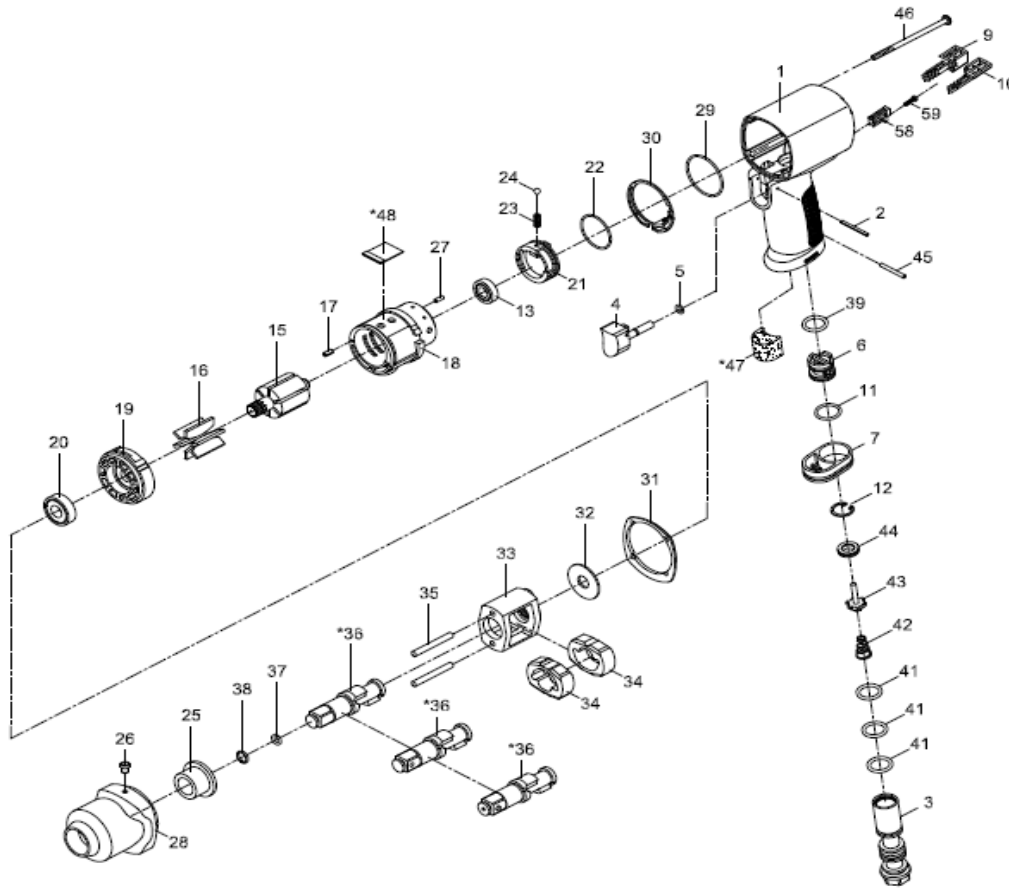


- NL** Slagmoersleutel
- GB** Impact wrench
- D** Schlagschrauber
- F** Boulonnoise
- I** Avvitatori ad Impulso
- DK** Slagnøgle
- N** Muttertrekere

- RC2850**
- RC2850**
- RC2850**
- RC2850**
- RC2850**
- RC2850**
- RC2850**



2017



Index	Parts No.	Description	Qty
1	RPSM414114P01	Motor Housing	1
2	RPSM73102	Spring pin 2x24	1
3	RPSM43413403	Air inlet	1
4	RPSM41411404	Trigger	1
5	RPSMOR00400100	O-Ring 4x1	1
6	RPSM43413406	Reverse Valve	1
7	RPSM41401207	Exhaust diffuser	1
9	RPSM41411410R	Forward button	1
10	RPSM41411410L	Reverse button	1
11	RPOR01705200	O-Ring 17,5 x2	1
12	RPSMRTW17	Retaining Ring	1
13	RPBB6900ZZ	Ball Bearing	1
15	RPSM41401215	Rotor	1
16	RPSM41401216	Rotor blade	6
17	RPSM7011713	Spring pin 2,5 x 5	1
18	RPSM41411418	Cylinder	1
19	RPSM41401219	Front end plate	1
20	RPBB6001ZZ	Ball Bearing	1
21	RPSM41411421	Air regulator	1
22	RPOR03200105	O-Ring	1
23	RPSM43403323	Spring	1
24	RPSM5K3011B25	Steel ball	1
25	RPSM41401225	Anvil bushing	1
26	RPSM41401254	Oil cap	1
27	RPSM51217	Spring pin	1

Index	Parts No.	Description	Qty
28	RPSM41411428	Hammer case	1
29	RPOR03708106	O-Ring 37,8 x 1,6	1
30	RPSM41411434	Gasket	1
31	RPSM41411435	Gasket	1
32	RPSM41401227	Washer	1
33	RPSM41401208	Hammer case	1
34	RPSM41401211	Hammer	2
35	RPSM41401217	Hammer pin	2
36	RPSM4340120211	Anvil	1
37	RPSM40305	O-Ring 6,5 x 2	1
38	RPSM40303	Retainer ring	1
39	RPOR01505275	O-Ring 15,5 x 2,75	1
41	RPOR01505206	O-Ring 15,54 x 2,62	3
42	RPSM43413447	Valve spring	1
43	RPSM43403348	Valve stem	1
44	RPSM43413445	Rubber spacer	1
45	RPSM73402	Spring pin 2,5 x 22	1
46	RPSM41411430	Screw M4x80	4
*47	RPSM75725153	Muffler material	1
*48	RPSM41401251	Muffler material	1
58	RPSM41411461	Partition	1
59	RPSM43413450	Screw	1

\* optional parts