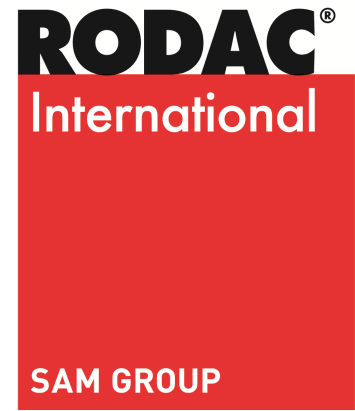


RBALLOON



Notice technique

RBALLOON

Crics hydropneumatiques à boudins

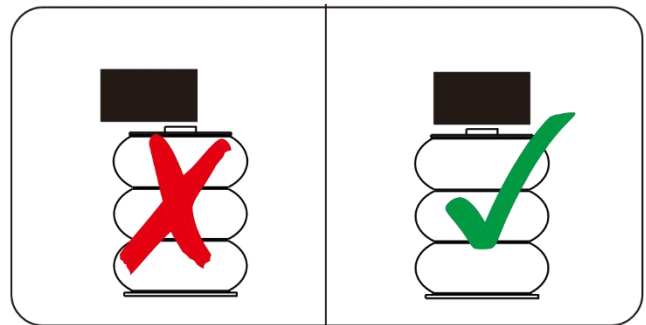
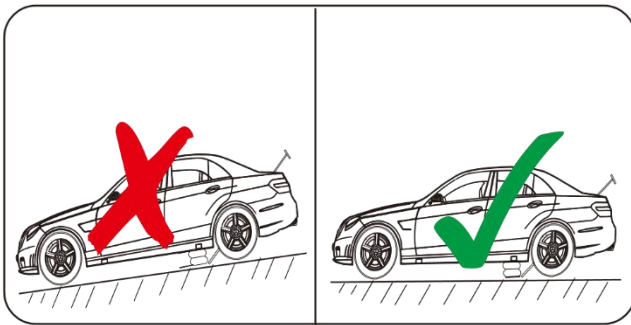
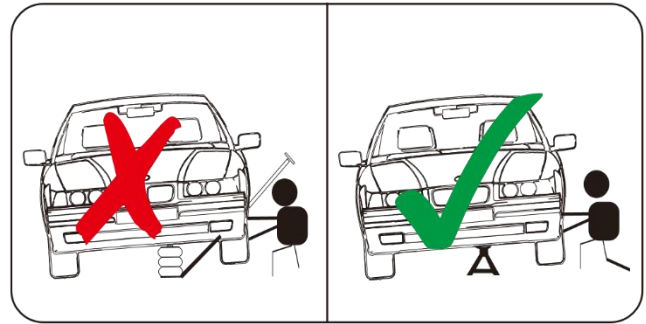
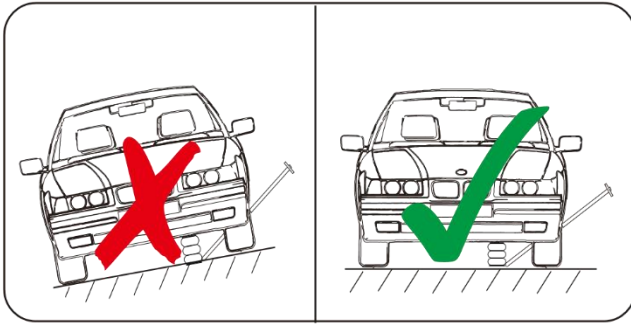




RBALLOON



ATTENTION



CARACTERISTIQUES TECHNIQUES



Modèle	RBALLOON2	RBALLOON3
Capacité	2 Ton	2 Ton
Pression d'utilisation	10 Bar	10 Bar
A (Hauteur mini)	200 mm	155 mm
A + B + C (Hauteur maxi)	560 mm	430 mm
B (Hauteur extension)	300 mm	235 mm
C (Hauteur Levée)	60 mm	80 mm
D (Largeur)	250 mm	265 mm



RBALLOON



Operation Manual
RBALLOON
Pneumatic Balloon Jack

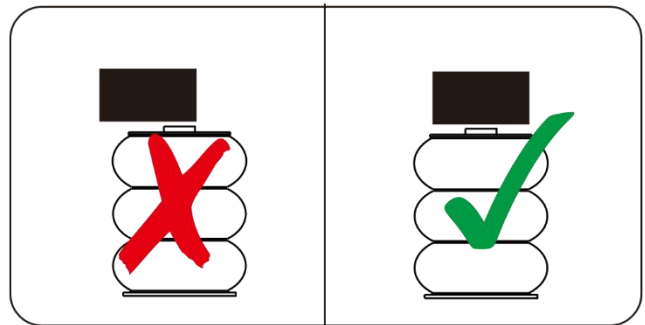
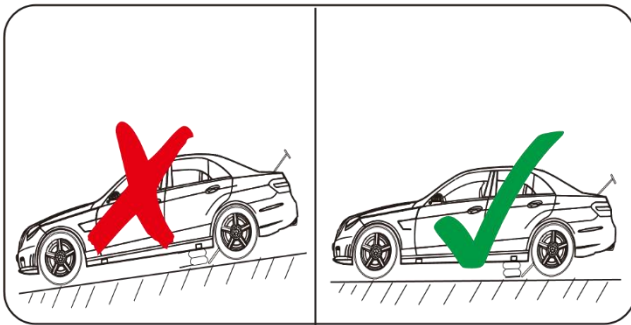
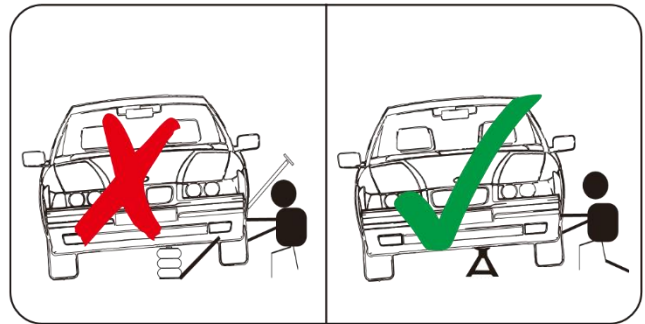
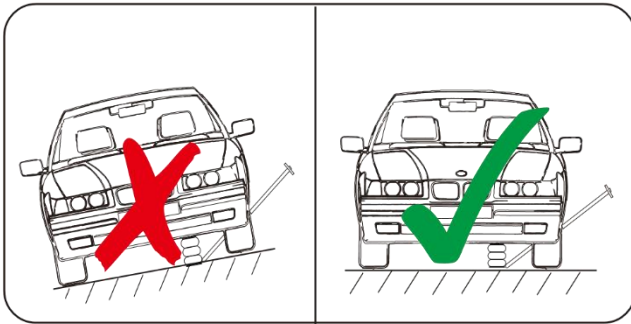




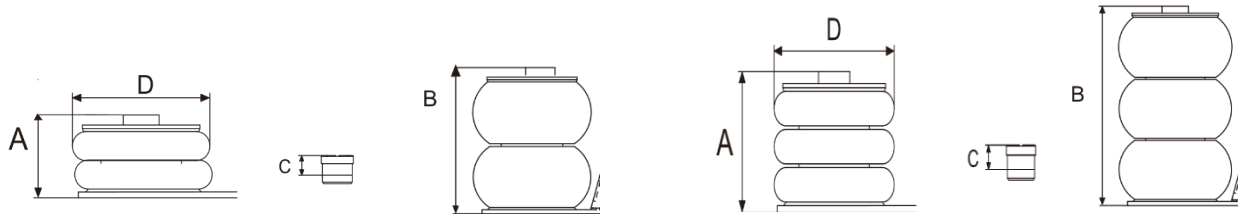
RBALLOON



WARNING



TECHNICAL CHARACTERISTICS



Model	RBALLOON2	RBALLOON3
Capacity	2 Ton	2 Ton
Working air pressure	10 Bar	10 Bar
A (Min. Height)	200 mm	155 mm
A + B + C (Max. Height)	560 mm	430 mm
B (Lifting height)	300 mm	235 mm
C (Extension height)	60 mm	80 mm
D (Width)	250 mm	265 mm



RBALLOON



Manual técnico

RBALLOON

Gatos neumáticos con membrana de alta resistencia

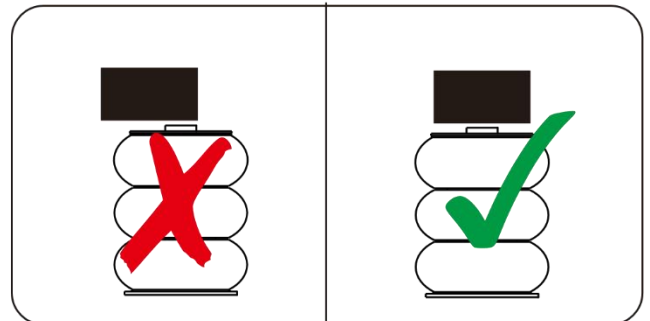
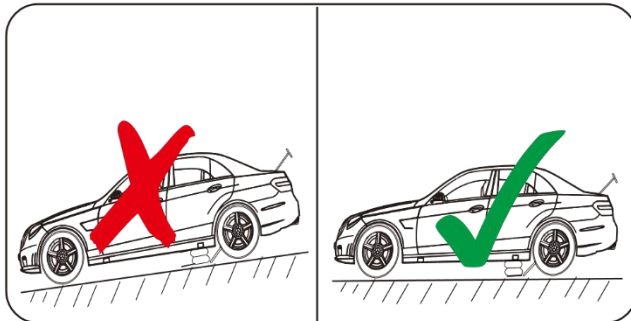
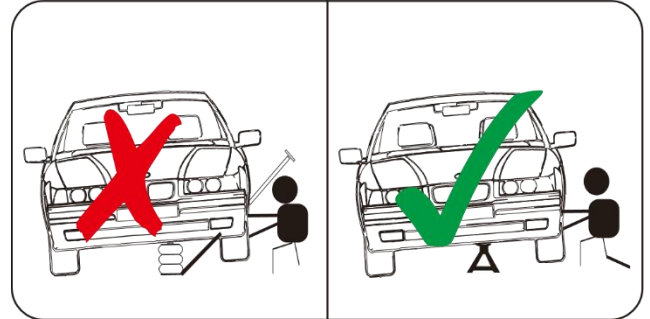
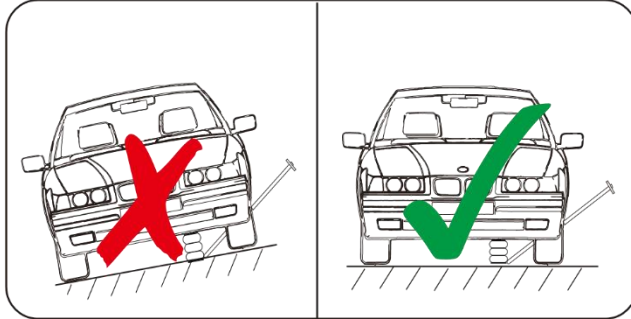




RBALLOON



ATENCIÓN



CARACTERISTICA TECNICA



Modelo	RBALLOON2	RBALLOON3
Capacidad	2 Ton	2 Ton
Presión de utilización	10 Bar	10 Bar
A (Altura min.)	200 mm	155 mm
A + B + C (Altura max)	560 mm	430 mm
B (elevacion altura)	300 mm	235 mm
C (Extensión altura)	60 mm	80 mm
D (Anchura)	250 mm	265 mm