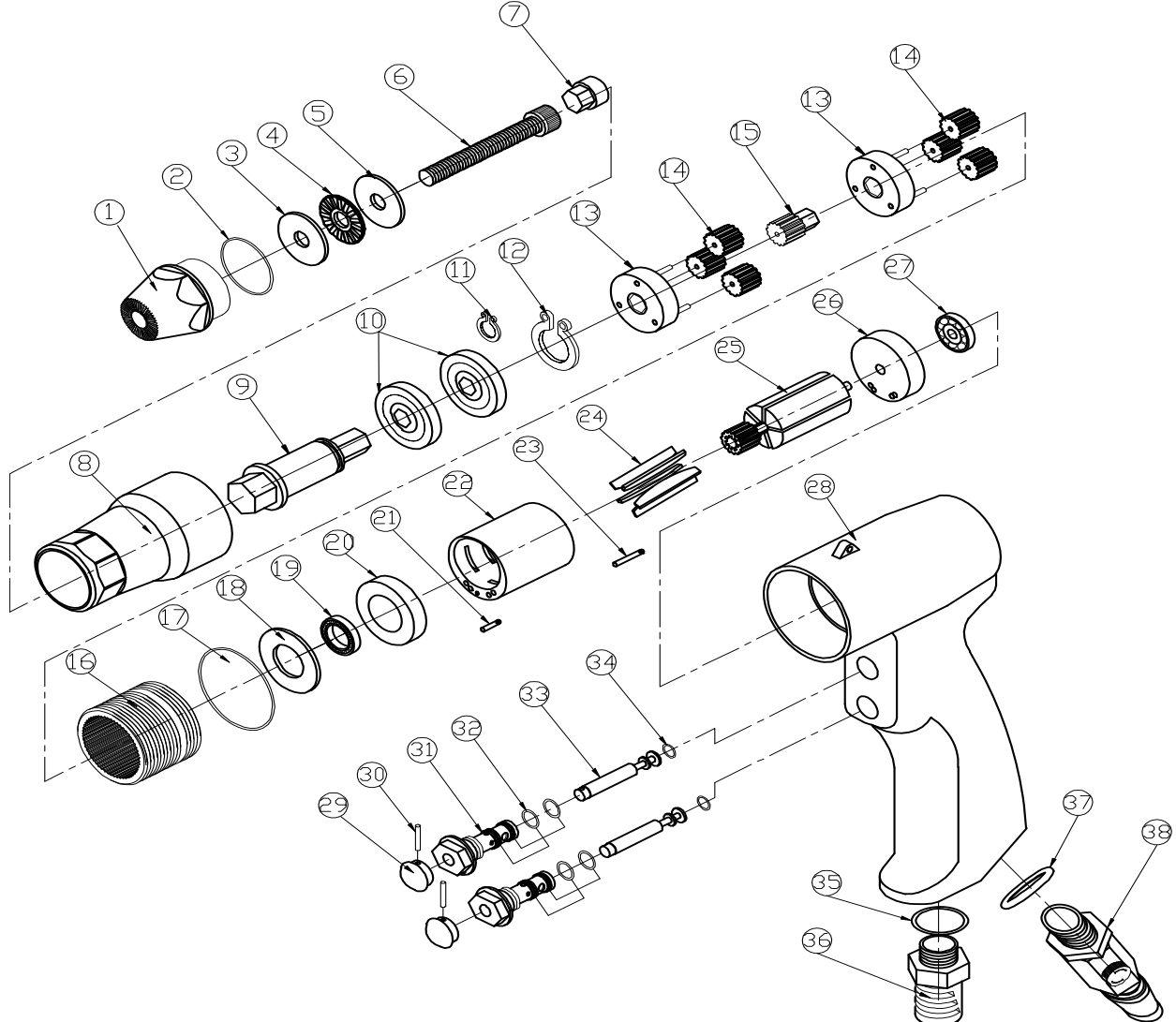


- NL** Blindklinkmoerentang 1086100A
- GB** Air Pull Nut setter 1086100A
- D** Gewindenutzieher 1086100A
- F** Riveteuse d'insert intensive 1086100A
- I** Air Pull Nut setter 1086100A
- DK** Air Pull Nut setter 1086100A
- N** Air Pull Nut setter 1086100A



Index	Parts	Description	Quantity
1A	RP351100106	Nose Piece (M6)	1
1B	RP351100108	Nose Piece (M8)	1
2	RP351100200	O-Ring	1
3A	RP351100306	Washer (M6)	1
3B	RP351100308	Washer (M8)	1
4	RP351100400	Ball Bearing	1
5A	RP351100506	Washer (M6)	1
5B	RP351100508	Washer (M8)	1
6A	RP351100606	Screw (M6)	1
6B	RP351100608	Screw (M8)	1
7A	RP351100706	Bolt Driver Hexagon (M6)	1
7B	RP351100708	Bolt Driver Hexagon (M8)	1
8	RP351100800	Nose Housing	1
9	RP351100900	Bolt Driver For Bearing	1
10	RP351101000	Bearing	2
11	RP351101100	C-Shape Ring	1
12	RP351101200	C-Shape Ring	1
13	RP351101300	Gear Cage	2
14	RP351101400	Planet Gear	6
15	RP351101500	Transmission Planet Gear	1
16	RP351101600	Internal Gear	1
17	RP351101700	O-Ring	1

Index	Parts	Description	Quantity
18	RP351101800	Washer	1
19	RP351101900	Bearing	1
20	RP351102000	End Plate	1
21	RP351102100	Pin	1
22	RP351102200	Cylinder	1
23	RP351102300	Pin	1
24	RP351102400	Rotary Blade	5
25	RP351102500	Rotator	1
26	RP351102600	End Plate	1
27	RP351102700	Bearing	1
28	RP351102800	Motor Case	1
29	RP351102900	Switch Lever	2
30	RP351103000	Pin	2
31	RP351103100	Air Inlet Switch	2
32	RP351103200	O-Ring	4
33	RP351103300	Air Valve Pin	2
34	RP351103400	O-Ring	2
35	RP351103500	O-Ring	1
36	RP351103600	Silencer Case	1
37	RP351103700	O-Ring	1
38	RP351103800	Air Regulator	1