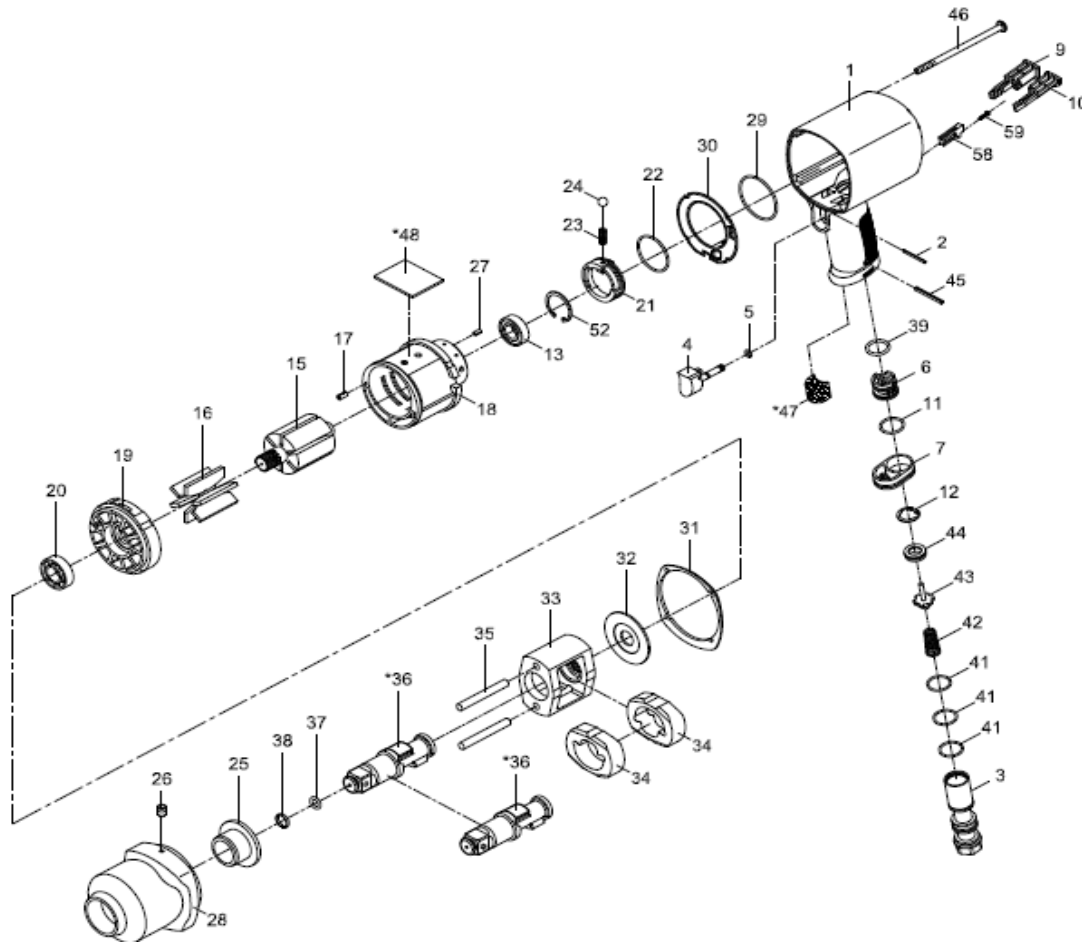


NL	Slagmoersleutel	RC3850
GB	Impact wrench	RC3850
D	Schlagschrauber	RC3850
F	Boulonneuse	RC3850
I	Avvitatori ad Impulso	RC3850
DK	Slagnøgle	RC3850
N	Muttertrekere	RC3850



Index	Parts No.	Description	Qty
1	RPSM45-4154P01	Motor Housing	1
2	RPSM73102	Spring pin	1
3	RPSM45-415403	Air inlet	1
4	RPSM45-415404	Trigger	1
5	RPOR00400100	O-ring 4x1	1
6	RPSM45-415406	Reverse valve	1
7	RPBM43-403607	Exhaust diffuser	1
9	RPSM45-415410R	Forward button	1
10	RPSM45-415410L	Reverse button	1
11	RPOR02005200	O-Ring 20,5 x 2	1
12	RPSM80231	Retainer ring	1
13	RPBB6002ZZ	Ball bearing	1
15	RPSM45-405715	Rotor	1
16	RPSM45-405116	Rotor blade	6
17	RPSM7011713	Spring pin 2,5 x 5	1
18	RPSM45-415418	Cylinder	1
19	RPSM45-405119	Front end plate	1
20	RPBM020320	Ball bearing	1
21	RPSM45-415421	Air regulator	1
22	RPOR03805200	O-Ring 38,5 x 2	1
23	RPSM43-403323	Spring	1
24	RPSM5K3011B25	Steel ball	1
25	RPSM45-405125	Anvil bushing	1
26	RPSM41401254	Oil cap	1
27	RPSM51217	Spring	1

Index	Parts No.	Description	Qty
28	RPSM45-415428	Hammer case	1
29	RPOR04705200	O-Ring 47,5 x 2	1
30	RPSM45-415434	Gasket	1
31	RPSM45-415435	Gasket	1
32	RPSM45-405127	Washer	1
33	RPSM45-405108	Hammer cage	1
34	RPSM45-405111	Hammer	2
35	RPSM45-405117	Hammer pin 7,6 x 63,5	2
36	RPSM45-40510211	Anvil	1
37	RPOR01000305	O-Ring 10 x 3,5	1
38	RPSM45-405112	Retaining ring	1
39	RPOR01804207	O-Ring 18,4 x 2,7	1
41	RPOR01908204	O-Ring 19,8 x 2,4	3
42	RPSM43-403147	Valve Spring	1
43	RPSM43-403148	Valve stem	1
44	RPSM45-415445	Rubber spacer	1
45	RPSM51938	Spring pin 3 x 30	1
46	RPSM45-405630	Screw	4
*47	RPSM45-405153	Muffler material	1
*48	RPSM45-405151	Muffler material	1
52	RPSM70938	Retaining ring	1
58	RPSM45-415461	Partition	1
59	RPSM43-413450	Screw	1