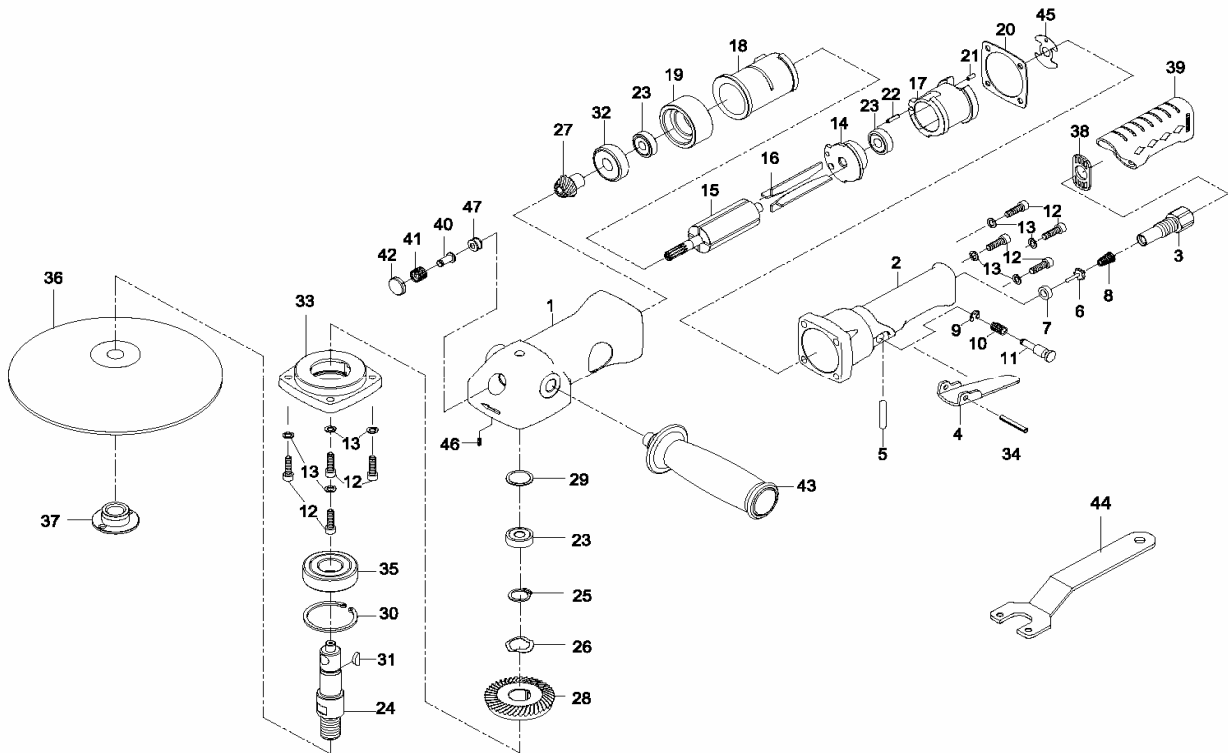


- NL** Poets- en Schuurmachine
- GB** Polisher and grinder
- D** Polier und Schleifmaschine
- F** Polissage et meuleuse
- I** Pulitrice e levigatrice
- DK** Polere-og slibemaskine
- N** Poler -og slipemaskine

- RC 7240 / 7242**
- RC 7240 / 7242**
- RC 7240 / 7242**
- RC 7240 / 7242**
- RC 7240 / 7242**
- RC 7240 / 7242**
- RC 7240 / 7242**



| Index | Parts No.        | Description           | Quantity |
|-------|------------------|-----------------------|----------|
| 1     | RPSM6N-666101    | Motor housing         | 1        |
| 2     | RPSM6N-666102    | Valve housing         | 1        |
| 3     | RPSM6N-666103    | Air inlet             | 1        |
| 4     | RPSM5G-619704-03 | Throttle Lever        | 1        |
| 5     | RPSMN-666105     | Valve pin             | 1        |
| 6     | RPSM32-301210    | Valve                 | 1        |
| 7     | RPSM32-301207    | Valve seat            | 1        |
| 8     | RPSM32-301208    | Spring                | 1        |
| 9     | RPSTW5           | Retaining ring        | 1        |
| 10    | RPSM6N-666107    | Spring                | 1        |
| 11    | RPSM6N-666134    | Safe lever            | 1        |
| 12    | RPSM6N-666137    | Screw m5x22L          | 8        |
| 13    | RPSM40344        | Washer M5             | 8        |
| 14    | RPSM5D-619014    | End plate             | 1        |
| 15    | RPSM67-666115    | Rotor <b>7240</b>     | 1        |
| 15A   | RPSM6N-666115    | Rotor <b>7242</b>     | 1        |
| 16    | RPSM61916        | Rotor blade           | 4        |
| 17    | RPSM5D-619024    | Exhaust deflector     | 1        |
| 18    | RPSM5D-619018    | Cylinder              | 1        |
| 19    | RPSM61919        | Front plate           | 1        |
| 20    | RPSM6N-666117    | Gasket                | 1        |
| 21    | RPSM63062        | Spring pin 3x8L       | 1        |
| 22    | RPSM40317-13     | Spring pin 3x12L      | 1        |
| 23    | RPBB608ZZ        | Ball bearing          | 3        |
| 24    | RPSM6N-666124    | Spindle               | 1        |
| 25    | RPSTW-15         | Retaining ring stw-15 | 1        |

| Index | Parts No.     | Description                | Quantity |
|-------|---------------|----------------------------|----------|
| 26    | RPSTW16       | Spring Washer WW-16        | 1        |
| 27    | RPSM67-666127 | Pinion gear <b>7240</b>    | 1        |
| 27A   | RPSM6N-666127 | Pinion gear <b>7242</b>    | 1        |
| 28    | RPSM67-666128 | Bevel gear <b>7240</b>     | 1        |
| 28A   | RPSM6N-666128 | Bevel gear <b>7242</b>     | 1        |
| 29    | RPSM6N-666111 | Spacer                     | 1        |
| 30    | RPSMRTW40     | Retaining ring RTW-40      | 1        |
| 31    | RPSM61934     | key                        | 1        |
| 32    | RPBB6201Z     | Ball bearing               | 1        |
| 33    | RPSM6N-666113 | Spindle cap                | 1        |
| 34    | RPSP04002500  | Spring pin                 | 1        |
| 35    | RPSM06203Z    | Ball bearing               | 1        |
| 36    | RA8653        | Pad 7" <b>7240</b>         | 1        |
| 36A   | RA8605V M14   | Hook pad 150mm <b>7242</b> | 1        |
| 37    | RA8654        | Pad nut <b>7240</b>        | 1        |
| 38    | RPSM6N-666123 | Exhaust diffuser           | 1        |
| 39    | RPSM6N-666152 | Rubber grip                | 1        |
| 40    | RPSM6N-666129 | Shaft                      | 1        |
| 41    | RPSM6N-666108 | Spring                     | 1        |
| 42    | RPSM6N-666130 | Press button               | 1        |
| 43    | RPSM5G-619751 | Handle ( <b>take 43a</b> ) | 1        |
| 43A   | RA7700        | Vibration handle           | 1        |
| 44    | RPSM619554    | Pin wrench                 | 1        |
| 45    | RPSM5D-619007 | Motor Gasket               | 1        |
| 46    | RPSM72022     | Set Screw (M4X4L)          | 1        |
| 47    | RPSM6N-666139 | Bushing <b>7242</b>        | 1        |