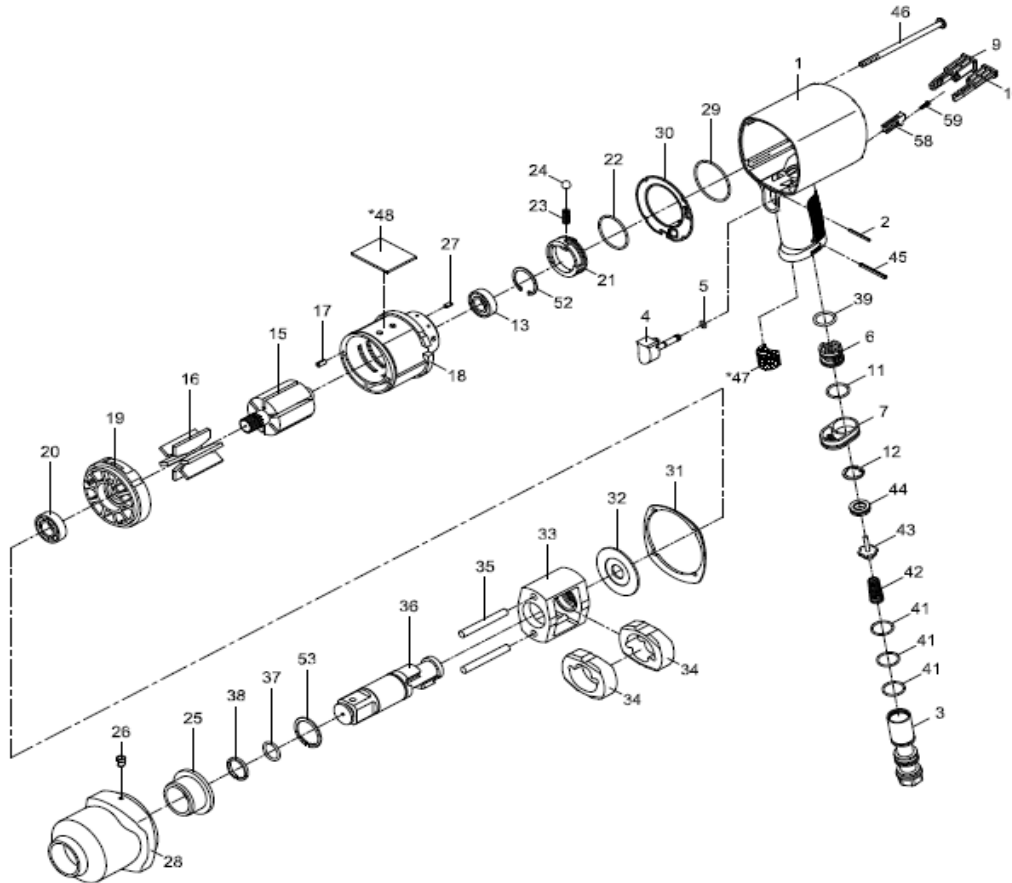


- NL** Slagmoersleutel
- GB** Impact wrench
- D** Schlagschrauber
- F** Boulonneuse
- I** Avvitatori ad Impulso
- DK** Slagnøgle
- N** Muttertrekere

- RC8850**
- RC8850**
- RC8850**
- RC8850**
- RC8850**
- RC8850**
- RC8850**



2017



Index	Parts No.	Description	Quantity
1	RPSM454154P01	Motor Housing	1
2	RPSM73102	Spring pin 2 x 24	1
3	RPSM45415403	Air inlet	1
4	RPSM45415404	Trigger	1
5	RPOR00400100	O-Ring 4 x 1	1
6	RPSM45415406	Reverse valve	1
7	RPSM43403607	Exhaust diffuser	1
9	RPSM45415410R	Forward button	1
10	RPSM45415410L	Reverse button	1
11	RPOR02005200	O-Ring 20,5 x 2	1
12	RPSM80231	Retaining ring	1
13	RPBB6002ZZ	Ball Bearing	1
15	RPSM45405715	Rotor	1
16	RPSM45405116	Rotor blade	6
17	RPSM7011713	Spring pin 2,5 x 5	1
18	RPSM45415418	Cylinder	1
19	RPSM45405119	Front end plate	1
20	RPBB6003ZZ	Ball Bearing	1
21	RPSM45415421	Air regulator	1
22	RPOR03805200	O-Ring 38,5 x 2	1
23	RPSM43403323	Spring	1

Index	Parts No.	Description	Quantity
28	RPSM45415428	Hammer case	1
29	RPOR04705200	O-Ring 47,5 x 2	1
30	RPSM45415434	Gasket	1
31	RPSM45415435	Gasket	1
32	RPSM45405127	Washer	1
33	RPSM45405108	Hammer cage	1
34	RPSM45405111	hammer	2
35	RPSM45405117	Hammer pin	2
36	RPSM47405102	Anvil	1
37	RPSM10211	O-Ring 17,8 x 2,4	1
38	RPSM47405112	Retaining Ring	1
39	RPOR01804207	O-Ring 18,4 x 2,7	1
41	RPOR01908204	O-Ring 19,8 x 2,4	1
42	RPSM43403147	Valve spring	1
43	RPSM43403148	Valve stem	1
44	RPSM45415445	Rubber spacer	1
45	RPSM51938	Spring pin 3 x 30	1
46	RPSM45405630	Screw	4
*47	RPSM45405153	Muffler material	1
*48	RPSM45405153	Muffler material	1
52	RPSM70938	Retaining Ring	1