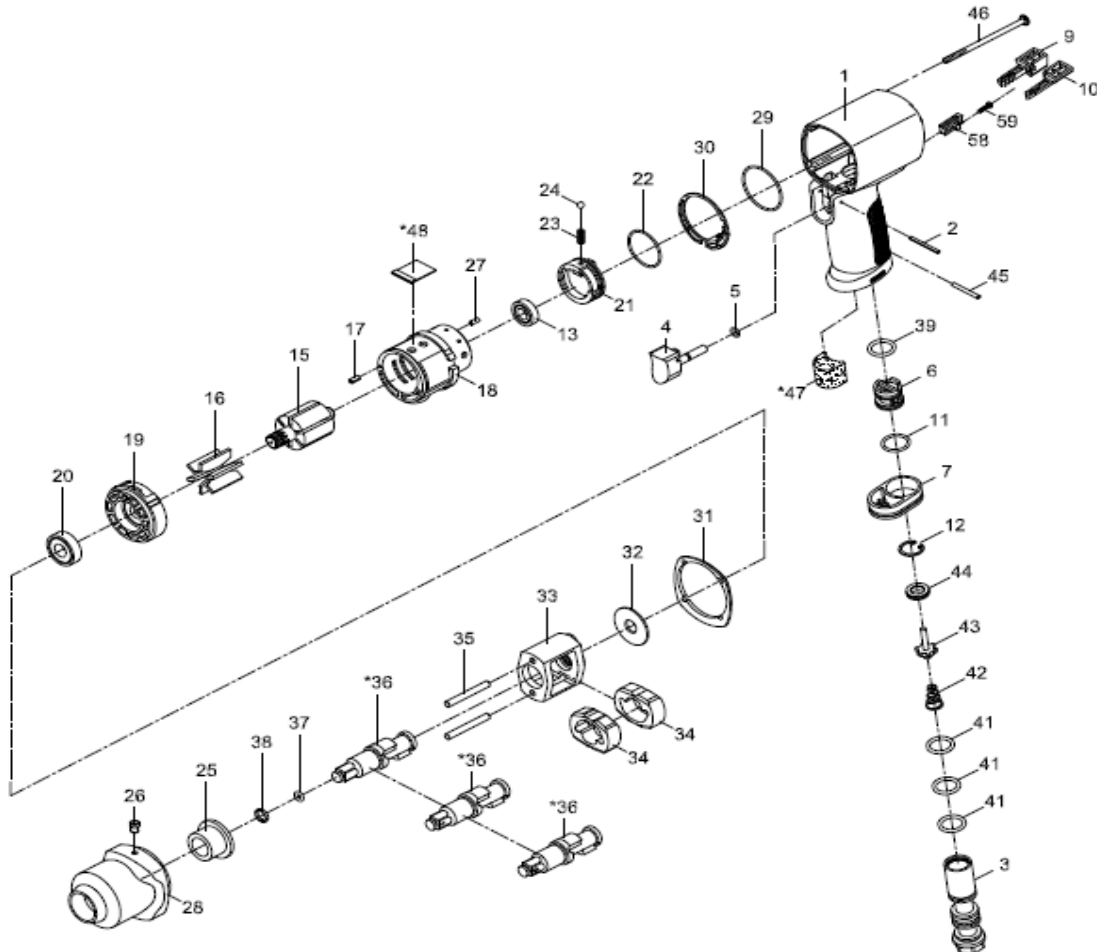


NL	Slagmoersleutel	RC660
GB	Impact wrench	RC660
D	Schlagschrauber	RC660
F	Boulonreuse	RC660
I	Avvitatori ad Impulso	RC660
DK	Slagnøgle	RC660
N	Muttertrekere	RC660



Index	Parts No.	Description	Qty
1	RPSM414114P01	Motor Housing	1
2	RPSM73102	Spring Pin 2 x 24	1
3	RPSM43413403	Air Inlet	1
4	RPSM41411404	Trigger	1
5	RPOR00400100	O-Ring 4x1	1
6	RPSM43413406	Reverse Valve	1
7	RPSM41401207	Exhaust Diffuser	1
9	RPSM41411410R	Forward button	1
10	RPSM41411410L	Reverse Button	1
11	RPOR01705200	O-Ring 17.5x2	1
12	RPSMRTW17	Retainer ring	1
13	RPBB6900ZZ	Ball Bearing	1
15	RPSM41401215	Rotor	1
16	RPSM41401216	Rotor Blade	6
17	RPSM7011713	Spring pin	6
18	RPSM41411418	Cylinder	1
19	RPSM41401219	Front End Plate	1
20	RPBB600ZZ	Ball Bearing	1
21	RPSM41411421	Air Regulator	1
22	RPOR03200105	O-Ring 32x1.5	1
23	RPSM43403323	Spring	1
24	RPSM5K3011B25	Steel Ball	1
25	RPSM41401225	Anvil Bushing	1
26	RPSM41401254	Oil cap	1
27	RPSM51217	Spring pin	1

Index	Parts No.	Description	Qty
28	RPSM41411428	Hammer case	1
29	RPOR03708106	O-Ring 37.8 x 1.6	1
30	RPSM41411434	Gasket	1
31	RPSM41411435	Gasket	1
32	RPSM41401227	Washer	1
33	RPSM41401208	Hammer cage	1
34	RPSM41401211	Hammer	2
35	RPSM41401217	Hammer pin	2
36	RPSM4140120211	Anvil	1
37	RPOR00307108	O-Ring 3.68 x 1.78	1
38	RPSM40103	Retainer ring	1
39	RPOR1505275	O-Ring 15.5 x 2.75	1
41	RPOR01505206	O-Ring 15.54 x 2.62	3
42	RPSM43413447	Valve spring	1
43	RPSM43403348	Valve stem	1
44	RPSM43413445	Rubber spacer	1
45	RPSM73402	Spring pin 2.5x 22	1
46	RPSM41411430	Screw M4x80	4
*47	RPSM75725153	Muffler material	1
*48	RPSM41401251	Muffler material	1
58	RPSM41411461	Partition	1
59	RPSM43413450	Screw	1
*	optional parts		