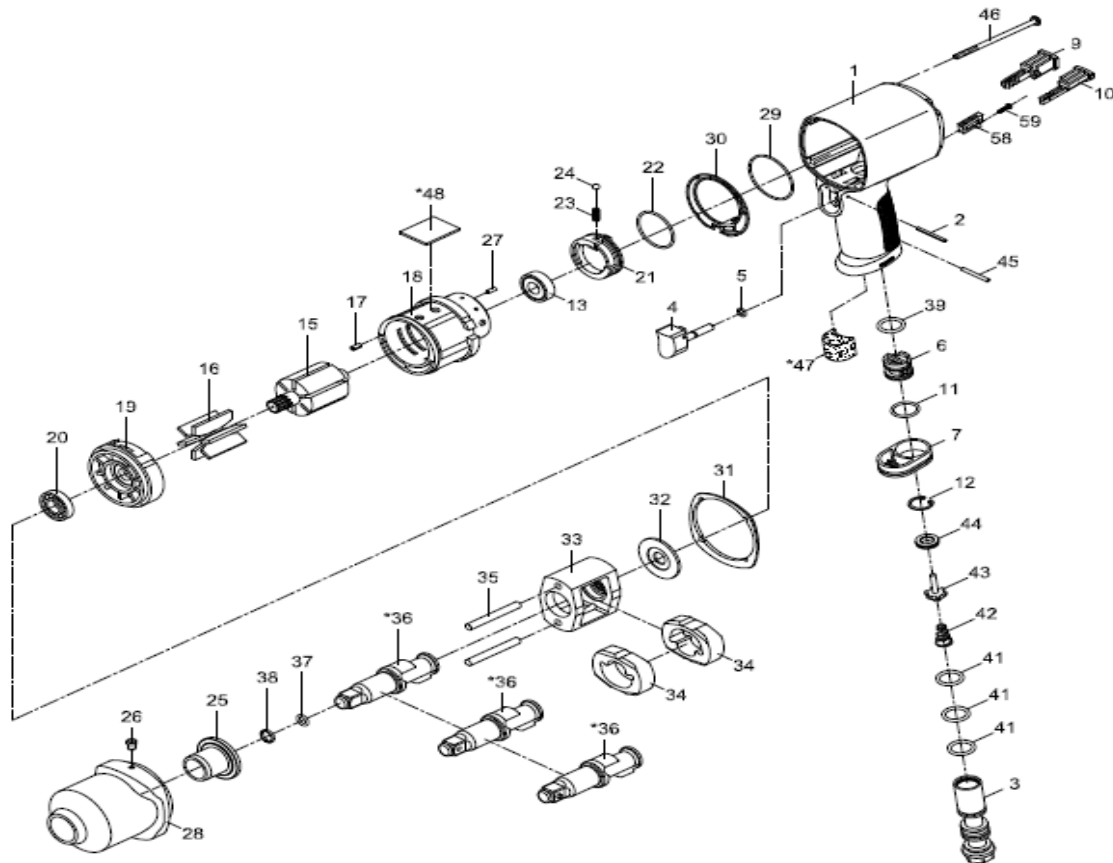


- NL** Slagmoersleutel
- GB** Impact wrench
- D** Schlagschrauber
- F** Boulonreuse
- I** Avvitatori ad Impulso
- DK** Slagnøgle
- N** Muttertrekere

- RC2890**
- RC2890**
- RC2890**
- RC2890**
- RC2890**
- RC2890**
- RC2890**



2017



Index	Parts	Description	Quantity	Index	Parts	Description	Quantity
1	RPSM434134P01	Motor housing	1	27	RPSM51217	Spring pin	1
2	RPSM73102	Spring pin 2x24	1	28	RPSM43413428	Hammer case	1
3	RPSM43413403	Air inlet	1	29	RPOR04300105	O-Ring 43 x 1.5	1
4	RPSM43413404	Trigger	1	30	RPSM43413434	Gasket	1
5	RPOR00400100	O-Ring 4x1	1	31	RPSM43413435	Gasket	1
6	RPSM43413406	Reverse valve	1	32	RPSM43403327	Washer	1
7	RPSM41401207	Exhaust Diffuser	1	33	RPSM43403308	Hammer cage	1
9	RPSM43413410R	Forward button	1	34	RPSM43403111	Hammer	2
10	RPSM43413410L	Reverse button	1	35	RPSM43403117	Hammer pin	2
11	RPOR01705200	O-Ring 17,5 x 2	1	36	RPSM4340310211	Anvil	1
12	RPSMRTW17	Retainer ring	1	37	RPSM40305	O-Ring 6,5 x 2	1
13	RPBB6001ZZ	Ball bearing	1	38	RPSM40303	Retainer ring	1
15	RPSM43413415	Rotor	1	39	RPOR01505275	O-Ring 15,5 x 2,75	1
16	RPSM43403816	Rotor Blade	6	41	RPOR01505206	O-Ring	3
17	RPSM7011713	Spring pin 2,5 x 5	1	42	RPSM43413447	Valve spring	1
18	RPSM43413418	Cylinder	1	43	RPSM43403348	Valve stem	1
19	RPSM43403319	Front end plate	1	44	RPSM43413446	Rubber spacer	1
20	RPBBEE4	Ball bearing	1	45	RPSM73402	Spring pin 2,5 x 22	1
21	RPSM43413421	Air regulator	1	46	RPSM43403330	Screw	4
22	RPOR03407108	O-Ring 34.65 x 1,78	1	*47	RPSM75725153	Muffler material	1
23	RPSM43403323	Spring	1	*48	RPSM43403351	Muffler material	1
24	RPSM5K3011B25	Steel ball	1	58	RPSM43413461	Partition	1
25	RPSM43403325	Anvil bushing	1	59	RPSM43413450	Screw	1
26	RPSM41401254	Oil cap	1				

** Optional parts